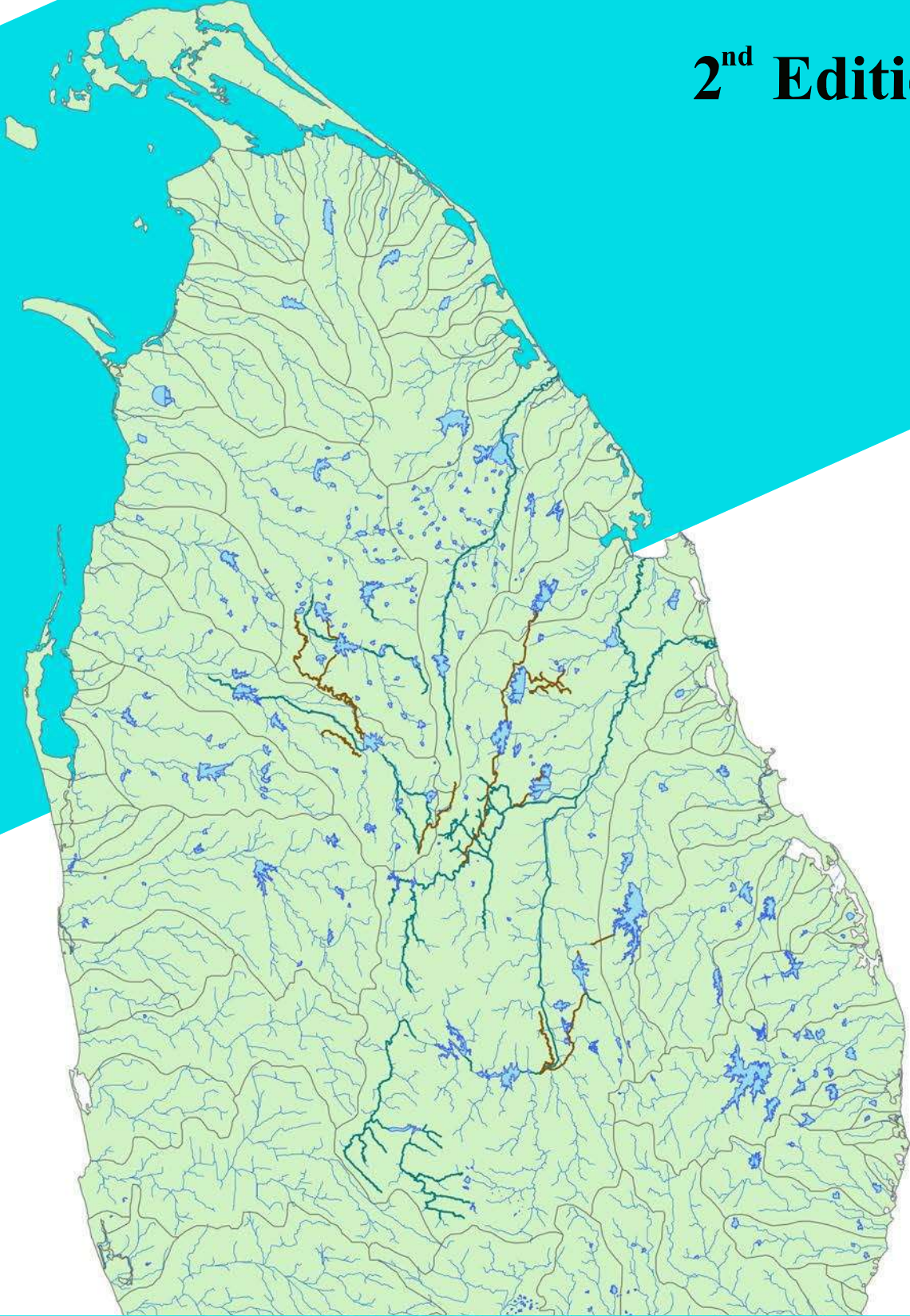


SCHEME REGISTER

2nd Edition



IRRIGATION DEPARTMENT

SCHEME REGISTER

2nd Edition

Includes updated data as at 01.01.2022

Irrigation Department

1st Edition - 01.01.2020

2nd Edition - 01.01.2022

Editor's Note

Even though the Range Directors of Irrigation maintain the data related to the schemes of which under their purview those were not compiled in one document until December, 2019. First edition of this booklet was published on 01.01.2020 to fill that gap as it was noted the importance of such document in several occasions.

Everybody of irrigation Department specially all levels of engineers and technical staff experienced the usage of this booklet during the past two years. The appreciation received from various users encouraged us to go for second edition so that the users can have updated and accurate set of data including the recently commissioned new schemes and increased capacities due to raising of spill heights of existing schemes and new irrigable extents developed.

It is great pleasure for me to be the chief editor for both first and second editions. I must pay my sincere gratitude to the Eng. K.D Nihal Siriwardana, Director General of Irrigation and all the Additional Director generals of Irrigation for valuable instructions and directions. The co-operation extended by the Range Directors Divisional Irrigation Engineers in collection of the data is highly appreciated.

It would not be possible to publish this 2nd Edition within the year 2022 unless the dedication of Eng. Y.M.N.U. Buddhika (Chief Engineer of Assets Management Branch), Eng. T. Kajanthan (Irrigation Engineer) and T.P.C. Ruwanthi (Earth Resources Engineer). Therefore I pay my special thanks for them. The support given by Eng. A. Edirisinghe, Director (ICT & GIS) for editing the maps and checking and confirming the accuracy of coordinates is highly appreciated.

I am very much thankful to Eng. H.M. Junaid, Additional Director General of irrigation (SM), Eng. D. Abeysiriwardana Director (Water Management) and Eng. M.P. Bamunawita Director (Drainage and Flood Systems) for their cooperation and advices.

Finally all the Range Directors and Divisional Irrigation Engineers and all the employees of the department is humbly requested to give their valuable suggestions and furnish the data changed due to the development works which they involved with so that those can be included in the third edition.

Eng.W.K.S.Wickramapala
Director of Irrigation (Assets Management)
Chief Editor

Irrigation Department
230, Bauddhaloka Mawatha
Colombo 07
01.01.2022

Preface for 1st Edition

There are 103 numbers (75 no's Major Reservoirs and 28 nos Major Anicuts) of major schemes [more than 400 ha (1000 Acs) of irrigable area], 252 numbers of medium schemes [between 80 ha and 400 ha (200 and 1000 Acs) of irrigable area], 19 numbers of drainage schemes and 5 numbers of lift irrigation schemes located island wide under the 14 Administrative Regions. Few small-scale schemes [less than 80 ha (200 Acs) of irrigable area] are also maintained by Irrigation Department due to special reasons. Further, few medium scale schemes have been considered as major schemes due to historical and other special reasons.

Even though each Region has a list of schemes under that particular Region, so far these data have not been compiled in a single document. With experience it is learnt the importance of having one document with all these basic data so that anybody can easily find necessary information in case of allocating funds and furnishing data to the treasury or any other institution for budgeting or planning purposes. And this book will also help all the officers in the Department, scholars and general public to get basic idea about the Irrigation Schemes, maintained by the Irrigation Department.

This is the first step of a long journey of publishing of complete book including historical, technical and socio-economic data of each and every scheme under the Irrigation Department. As it takes a long time and need a huge effort, it is decided to publish this book including basic data which are needed frequently in day to day administrative and management purposes.

I must appreciate the encouragement given by Eng. K.D.N. Siriwardane Additional Director General of Irrigation (Investigation, Planning and Design), Eng.(Ms) I.D.S. Samarasuriya, Additional Director General of Irrigation (System Management) and Eng. H.M. Junaid, Director of Irrigation (Assets Management) to complete this work. In fact, the idea for compiling register of schemes maintained by the Department was suggested by Eng. W.K.S. Wickramapala Director of Irrigation (Regional Development) and he worked very hard to collect the right information and compile. Therefore I would like to pay my special gratitude to Eng. W.K.S. Wickramapala for his great effort and dedication for producing this document.

The contribution of Eng. L.G.A. Edirisinghe, Chief Engineer and Miss.G.P. Wickramasekera, Engineering Assistant (Geographic Information System Branch) by providing all the maps and most of the Co-ordinates, must be highly appreciated. Support of Eng.S.M.M.R.K. Samarakon, Director of Irrigation (Programme Management) and Eng.W.P.Sudharshani, Chief Engineer (Dam Safety), Eng.H.B.P.Bandara, Chief Engineer (Monaragala) is also appreciated.

My thanks must go to Eng. Tharindu C. Premathilaka (Irrigation Engineer), Eng. P. Rasikaran, (Irrigation Engineer), Mrs. W.W.P Nayana (Development Officer), Mr. Bathiya Jayaweera (Public Management Assistant) and Mr.Sugath Madusanka for their dedication in collecting information and editing. Yasani, Nishadi, Udeni, Kamani, Wasana, Lakmali, Chathurika, Naduni, Ajantha, Ranasinghe of Assets Management Branch also helped in many ways.

It is impossible to compile this book unless the Directors of Irrigation of all 14 Regions and all Divisional Irrigation Engineers have not furnished the data available at their offices. Therefore, the co-operation extended by them is highly appreciated.

Eng. S. Mohanarajah
Director General of Irrigation

Irrigation Department,
230, Bauddhaloka Mawatha, Colombo 07.
01.01.2020

Present Director General's Message for 2nd Edition

It is a great pleasure for me to add this message on the publication of 2nd Edition of Scheme Register.

This booklet includes all the basic information of the Irrigation Schemes under the purview of Irrigation Department. It is thus presenting an accurate and valuable source of basic information for the employees in water sector, administrators, practitioners and scholars.

I personally experienced the importance of this Scheme Register during last two years at many occasions, specially in media interviews, discussions and report writing. As this can be referred by any interested party confidently to avoid discrepancies in different documents produced by different sources in time to time.

I highly appreciate and pay my gratitude to the editors for their volunteer dedication in collection and compiling the information for 1st edition as well as the updated 2nd edition.

Eng. K.D.N. Siriwardana
Director General of Irrigation

Irrigation Department,
230, Bauddhaloka Mawatha, Colombo 07.
01.01.2022

Notes

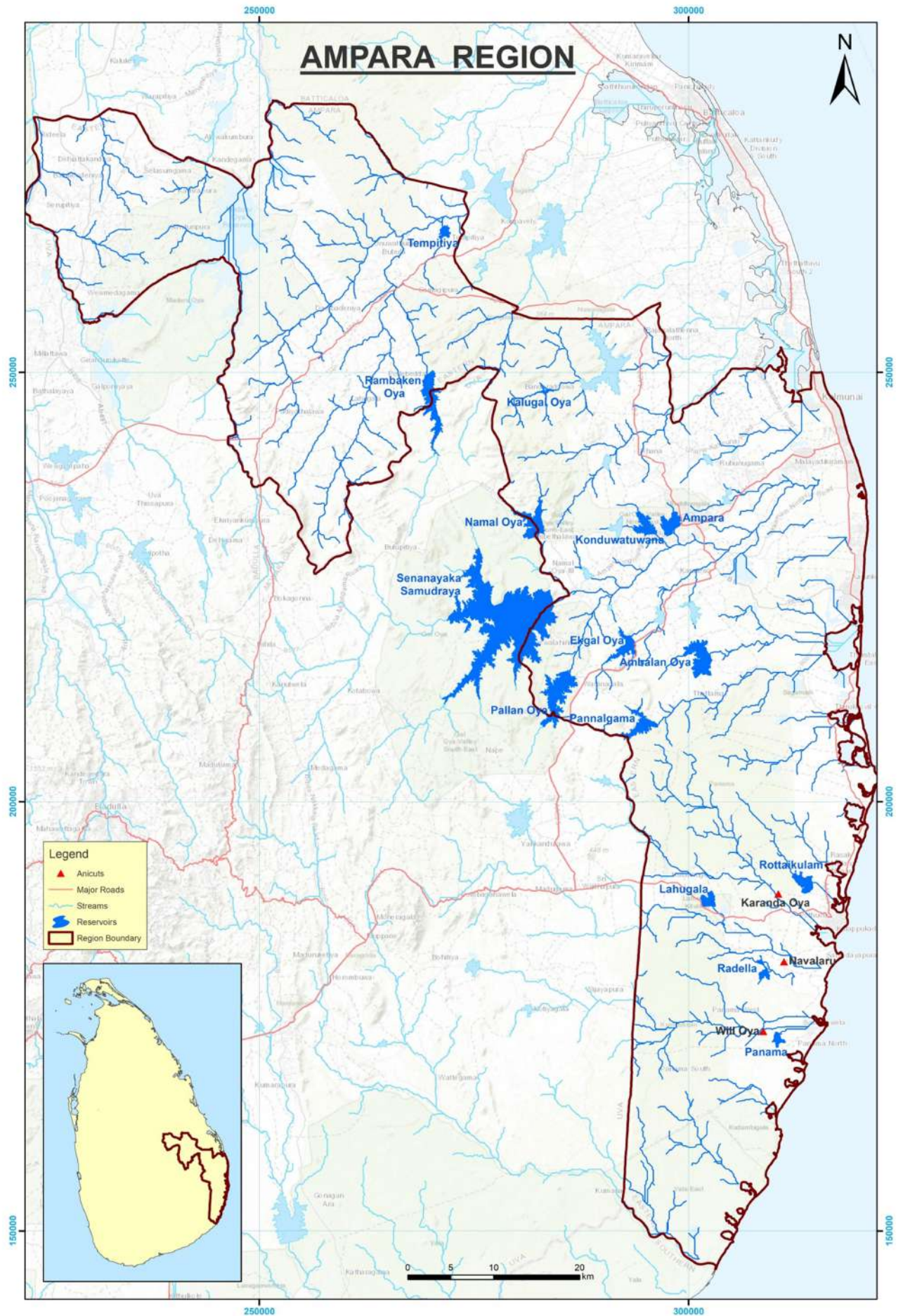
- This book is prepared based on the data provided by the relevant Regional Directors of Irrigation.
- The Schemes having 400 ha (1000 Acs) or more irrigable area are considered as Major Schemes.
- Under mentioned Schemes are considered as Major Schemes despite of their irrigable are due to Impotency and the historical value of those schemes.
 - Thisa wewa
 - Basavakkulama (Abaya wewa)
 - Kakirioboda
 - Weheragala
 - Mau Ara
 - Nalanda
- The Schemes having less than 400 ha (1000 Acs) of irrigable area are considered as Medium Schemes.
- Conversion Factors
 - 1 ha = 2.471 Acs
 - 1 MCM = 810.71 Acs.ft.
- Co-ordinates :-
Based on EPSG – Kandawala/ Sri Lanka Grid
- This Register Includes all the Scheme maintained by Irrigation Department as at 01-01- 2022.

CONTENT

	Page No
• Irrigation Region Map	1
• Ampara Region Map	2
• Data of Schemes under Ampara Region	3-4
• Anuradhapura Region Map	5
• Data of Schemes under Anuradhapura Region	6-11
• Badulla Region Map	12
• Data of Schemes under Badulla Region	13-14
• Batticaloa Region Map	15
• Data of Schemes under Batticaloa Region	16
• Colombo Region Map	17
• Data of Schemes under Colombo Region	18-20
• Galle Region Map	21
• Data of Schemes under Galle Region	22-24
• Hambantota Region Map	25
• Data of Schemes under Hambanthota Region	26-27
• Kandy Region Map	28
• Data of Schemes under Kandy Region	29-30
• Kurunegala Region Map	31
• Data of Schemes under Kurunegala Region	32-33
• Mannar Region Map	34
• Data of Schemes under Mannar Region	35
• Monaragala Region Map	36
• Data of Schemes under Monaragala Region	37-38
• Polonnaruwa Region Map	39
• Data of Schemes under Polonnaruwa Region	40-41
• Puttalam Region Map	42
• Data of Schemes under Puttalam Region	43-44
• Trincomalee Region Map	45
• Data of Schemes under Trincomalee Region	46-47
• Summary 01 (Drainage Schemes)	48
• Summary 02(Lift Irrigation Schemes)	49
• Summary 03(Total No. of Major and Medium Schemes)	50
• Summary 04 (Total No. of Reservoir and Anicut)	51
• Summary 05 (Total Irrigable Area Under Different types of Scheme)	52

IRRIGATION REGIONS





Irrigation Schemes in Ampara Region

[Conversion Factors: 1 ha = 2.471 Acs & 1 MCM = 810.71 Acs.ft.]

Reservoirs

No.	Division	Name of Scheme	Capacity at FSL (MCM)	Irrigable Extent (ha.)	Co-ordinates	
					X	Y
Major						
1	Ampara	Senanayaka Samudraya	949.8	48,646	284158	223712
2	Ampara	Ambalan Oya	44.3	2,125	302171	218854
3	Ampara	Pannalgama	34.0	1,862	296313	209082
4	Ampara	Namal Oya	52.7	1,497	283168	231160
5	Ampara	Pallan Oya	115.6	1,416	285937	215337
6	Ampara	Ekgal Oya	29.0	1,012	293131	219418
7	Maha Oya	Rambaken Oya	56.1	909	269273	249664
8	Pottuvil	Rottaikulam	6.3	578	314316	190840
9	Pottuvil	Radella	2.5	517	308518	182036
10	Ampara	Kalugal Oya	10.1	455	284256	248013
Medium						
11	Pottuvil	Lahugala	3.3	355	303146	187845
12	Pottuvil	Panama	3.5	210	309976	173168
13	Mahaoya	Tempitiya	2.4	170	270996	266559
14	Ampara	Konduwatuwana	11.3	*	296340	231274
15	Ampara	Ampara	8.9	*	298370	231686
Total			1,329.8	59,752		

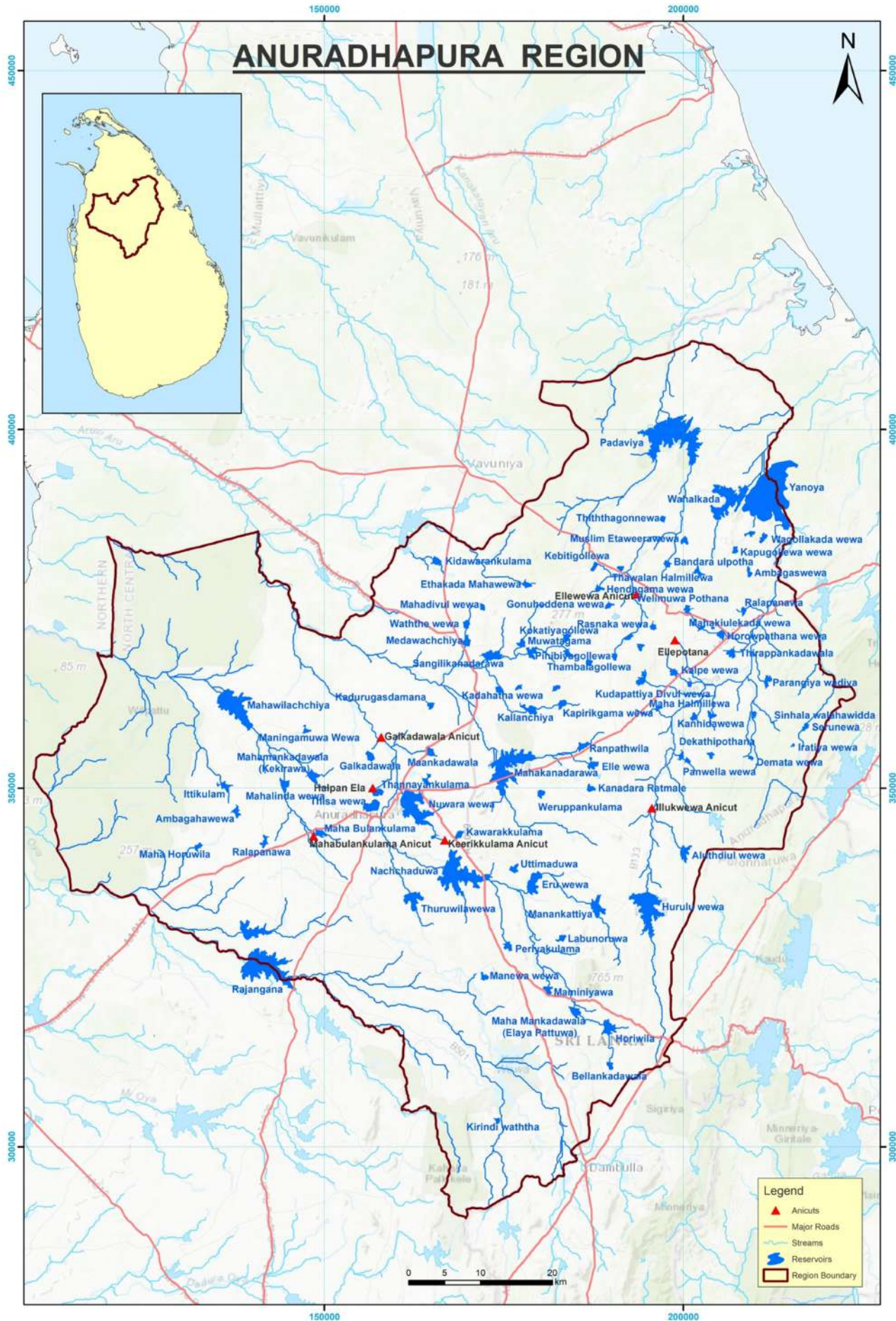
* Not a Scheme. Only Storage Reservoir.

Anicuts

No.	Division	Name of Scheme	Irrigable Extent (ha.)	Co-ordinate	
				X	Y
Major					
1	Pottuvil	Naval Aru	1,692	311112	181356
2	Pottuvil	Karanda Oya	1,643	310446	189244
Medium					
3	Pottuvil	Will Oya	221	308695	173235
Total			3,556		

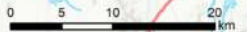
Total No. of Reservoirs	15
Total No. of Anicuts	3
Total Irrigable Extent (ha.)	63,308

ANURADHAPURA REGION



Legend

- ▲ Anicuts
- Major Roads
- Streams
- Reservoirs
- ▭ Region Boundary



Irrigation Schemes in Anuradhapura Region

[Conversion Factors: 1 ha = 2.471 Acs & 1 MCM = 810.71 Acs.ft.]

Reservoirs

No.	Division	Name of Scheme	Capacity at FSL (MCM)	Irrigable Extent (ha.)	Co-ordinates	
					X	Y
Major						
1	Rajangana	Rajangana	100.7	Gravity 6,475	138429	324998
				Lift 1,012		
2	Padaviya	Yanoya	169	4,501	210506	393237
3	Huruluwewa	Hurulu Wewa	67.8	4,209	193130	335339
4	Padaviya	Padaviya	104.8	3,521	195976	400466
5	Nachaduwa	Nachchaduwa	55.7	2,833	166443	338374
6	Anuradhapura	Mahakanadarawa	44.7	2,469	173102	353322
7	Anuradhapura	Mahawilachchiya	40.1	1,078	135056	362007
8	Anuradhapura	Nuwara Wewa	44.5	1,052	160709	347616
9	Padaviya	Wahalkada	53.0	809	208588	392319
10	Nachchaduwa	Thuruwila Wewa & Nachchaduwa Feeder Canal	10.1	551	161037	334911
11	Huruluwewa	Manankattiya	6.0	425	187151	333252
12	Anuradhapura	Thisa Wewa	4.3	365	157205	348401
13	Anuradhapura	Abaya Wewa (Basavakkulama)	2.1	156	157430	349876
Medium						
14	Huruluwewa	Kiulekada	10.4	325	204293	372170
15	Padaviya	Sangilikanadarawa	3.9	340	172767	367511
16	Huruluwewa	Parangiya Wadiya	1.9	293	211302	364572
17	Huruluwewa	Horiwila Wewa	4.7	287	188622	315794

No.	Division	Name of Scheme	Capacity at FSL (MCM)	Irrigable Extent (ha.)	Co-ordinates	
					X	Y
18	Anuradhapura	Labunoruwa	3.2	258	182256	328919
19	Anuradhapura	Maha Mankadawala (Elaya Pattuwa)	2.5	253	164436	354529
20	Anuradhapura	Mahalinda Wewa	1.6	251	143689	351644
21	Anuradhapura	Kallanchiya	2.4	243	178588	360254
22	Rajangana	Kirindiwaththa Wewa	0.57	219	173622	303895
23	Huruluwewa	Kudapattiya Divul Wewa	3.3	214	194711	365040
24	Anuradhapura	Mahamankadawala (Kekirawa)	1.7	195	184069	319592
25	Huruluwewa	Kanhidawewa	0.46	194	203485	360965
26	Huruluwewa	Horowpathana Wewa	0.76	194	205747	371763
27	Anuradhapura	Maminiyawa	1.8	188	180555	322352
28	Huruluwewa	Ralapanawa	0.72	175	208242	375371
29	Anuradhapura	Kadahatha Wewa	1.5	170	173853	364061
30	Huruluwewa	Sinhala Walahawidda Wewa	0.71	168	209626	359730
31	Padaviya	Bandara Ulpotha	1.2	162	197228	381351
32	Huruluwewa	Maha Halmillewa	0.59	154	197212	361284
33	Huruluwewa	Kanadara Ratmale Wewa	1.2	153	186801	349488
34	Padaviya	Kidawarankulam	1.4	151	164834	381250
35	Anuradhapura	Kapirikgama Wewa	2.2	146	182626	360884
36	Huruluwewa	Wagollakada Wewa	2.0	146	211723	385206
37	Huruluwewa	Dekathipothana	1.1	146	203252	354924
38	Anuradhapura	Uttimaduwa	1.6	142	176537	338140

No.	Division	Name of Scheme	Capacity at FSL (MCM)	Irrigable Extent (ha.)	Co-ordinates	
					X	Y
39	Anuradhapura	Galkadawala	0.83	142	155987	355223
40	Huruluwewa	Wadiga Wewa	0.50	142	200712	365396
41	Padaviya	Hendagama Wewa	1.0	136	188044	378452
42	Anuradhapura	Weruppankulam	1.0	130	179760	348742
43	Anuradhapura	Maha Bulankulama Wewa	1.6	130	148775	343286
44	Huruluwewa	Kapugollewa Wewa	1.5	121	206988	383637
45	Huruluwewa	Aluthdiul Wewa	8.6	115	199577	341017
46	Huruluwewa	Welimuwa Pothana	1.2	113	201513	375010
47	Padaviya	Mahadivul Wewa	0.74	113	171793	374831
48	Anuradhapura	Keerikkulama	0.53	112	164908	342999
49	Padaviya	Kirigollewa	0.68	108	178010	369727
50	Huruluwewa	Ranpathwila Wewa	2.6	108	185505	354961
51	Anuradhapura	Kadurugas damana	0.86	107	164226	362081
52	Padaviya	Ethakada Mahawewa	2.5	105	177603	378283
53	Anuradhapura	Mankadawala Wewa	1.4	105	147338	351615
54	Padaviya	Muwatagama	1.0	104	178504	368178
55	Huruluwewa	Panderellewa Wewa	1.1	104	199183	353980
56	Huruluwewa	Elle Wewa (Huruluwewa)	3.0	103	186623	352836
57	Padaviya	Gonuheddena Wewa	1.0	103	189538	376073
58	Anuradhapura	Periyakulama	1.7	101	174595	328157
59	Padaviya	Kebitigollewa	1.2	101	188045	381316

No.	Division	Name of Scheme	Capacity at FSL (MCM)	Irrigable Extent (ha.)	Co-ordinates	
					X	Y
60	Huruluwewa	Maha Wewalkada Wewa	1.6	101	192614	371619
61	Huruluwewa	Thawalan Halmillewa	1.6	101	202188	380532
62	Anuradhapura	Pihibiyagollewa	1.2	101	183256	369071
63	Rajangana	Ittikulam	0.52	97	135145	350818
64	Anuradhapura	Kokatiyagollewa	1.2	95	183843	370438
65	Anuradhapura	Kandewa Wewa	0.86	94	181680	363450
66	Padaviya	Aiyathige Wewa	0.56	92	191703	380847
67	Rajangana	Maha Horuwila Wewa	0.56	92	131926	341306
68	Huruluwewa	Rasnaka Wewa	0.38	91	195289	372409
69	Rajangana	Manewa Wewa	1.4	91	171867	323393
70	Rajangana	Ambagahawewa	0.37	91	136897	346520
71	Huruluwewa	Kalpe Wewa	2.2	91	199157	366393
72	Huruluwewa	Thirappankadawala	1.5	89	207145	369740
73	Huruluwewa	Ambagaswewa	0.60	89	209293	380569
74	Huruluwewa	Muslim Walahawiddawewa	0.40	89	193525	370049
75	Huruluwewa	Maradan Maduwa	1.3	89	208495	385388
76	Rajangana	Ralapanawa	0.56	89	142371	343222
77	Huruluwewa	Pethiyannekada Wewa	0.83	88	189962	368729
78	Padaviya	Muslim Etaweera Wewa	0.79	87	199660	384134
79	Anuradhapura	Kawarakkulama	1.1	85	168200	343033

No.	Division	Name of Scheme	Capacity at FSL (MCM)	Irrigable Extent (ha.)	Co-ordinates	
					X	Y
80	Anuradhapura	Maningamuwa Wewa	1.1	85	146997	357737
81	Anuradhapura	Eru Wewa	4.7	85	179053	335150
82	Huruluwewa	Bellankadawala Wewa	0.65	85	189327	311798
83	Padaviya	Waththe Wewa	0.76	84	170070	372302
84	Padaviya	Medawachchiya Wewa	1.5	81	170167	369775
85	Anuradapura	Thambalagollewa	0.57	81	186526	367236
86	Padaviya	Thiththagonnewa	1.9	81	197519	387959
87	Huruluwewa	Wahagahapu Wewa	0.55	81	201523	360595
88	Anuradhapura	Thalagaha Wewa	0.50	81	176630	363617
89	Anuradhapura	Thannayankulam	0.62	81	163639	351389
90	Huruluwewa	Mahakiulekada Wewa	0.4	81	202465	372070
91	Huruluwewa	Panwella Wewa	1.5	52	200112	353441
92	Huruluwewa	Demata Wewa	0.40	45	209109	354532
93	Huruluwewa	Serunewa	2.16	14	216880	358981
Total			827.59	38,873*		

*Lift irrigable extent is not included

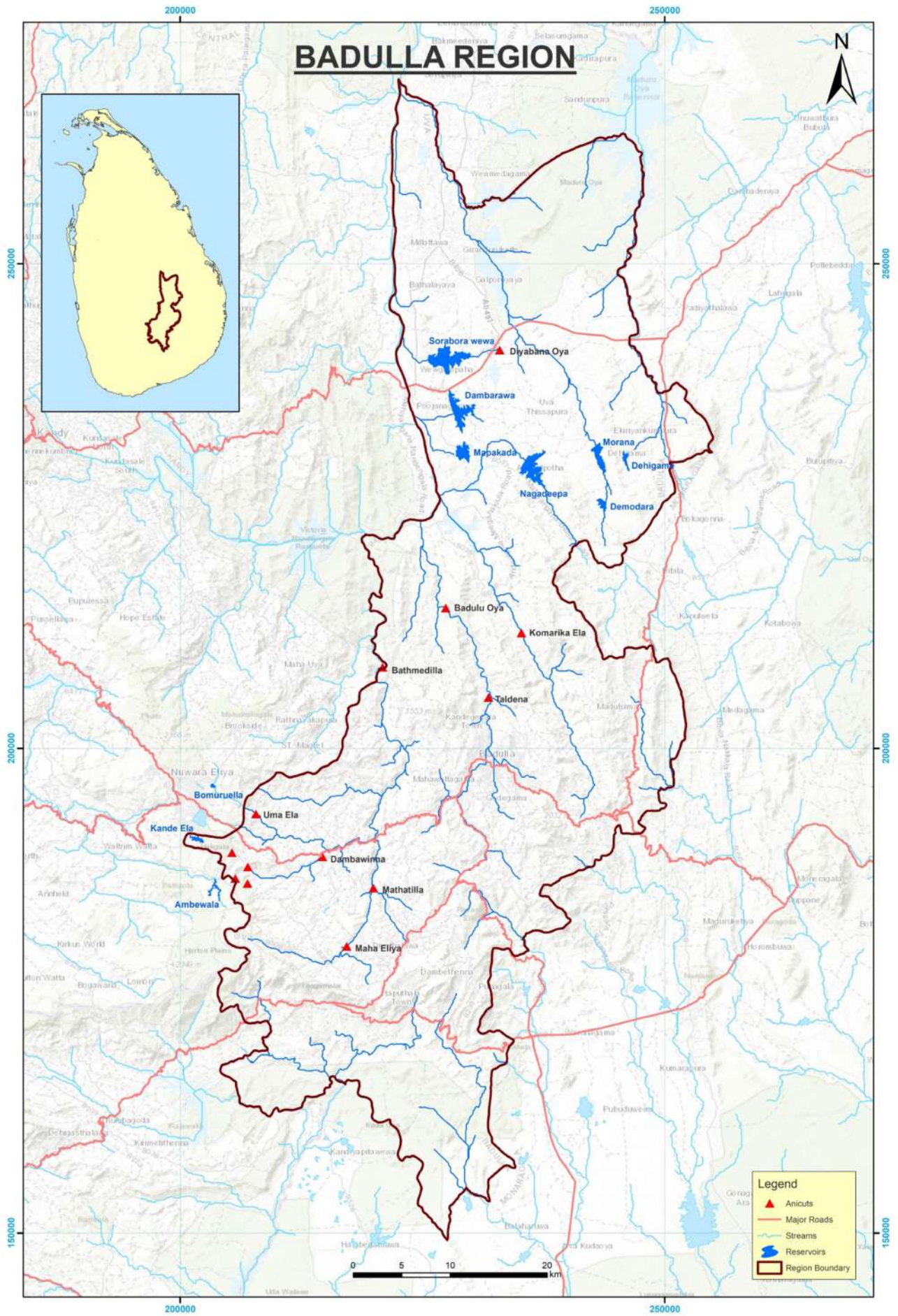
Anicuts

No.	Division	Name of Scheme	Irrigable Extent (ha.)	Co-ordinates	
				X	Y
Major					
1	Hurulu wewa	Iluk Wewa Anicut	488	195613	347242
Medium					
2	Hurulu Wewa	Ellepothana Anicut	324	198837	370443
3	Anuradhapura	Halpan Ella Anicut	253	156726	350047
4	Padaviya	Ellewewa Anicut	162	235110	286811
5	Hurulu Wewa	Moragaha Digiliya Anicut	113	188375	351839
6	Anuradhapura	Mahabulankulama Anicut	103	148481	343299
7	Anuradhapura	Keerakkukama Anicut	31	166792	342705
Total			1,474		

Lift Irrigation Schemes

No	Division	Name of Scheme	Irrigable Extent (ha.)
01	Rajangana	Rajangana	1,012
Total			1,012

Total No. of Reservoirs	93
Total No. of Anicuts	7
Lift Irrigation Schemes	1
Total Irrigable Extent (ha.)	41,359



Irrigation Schemes in Badulla Region

[Conversion Factors: 1 ha = 2.471 Acs & 1 MCM = 810.71 Acs.ft.]

Reservoirs

No.	Division	Name of Scheme	Capacity at FSL (MCM)	Irrigable Extent (ha.)	Co-ordinates	
					X	Y
Major						
1	Mapakada	Nagadeepa	29.4	1,700	235117	228896
2	Badulla	Kande Ela	2.2	931	202437	190308
3	Mapakada	Sorabora Wewa	20.7	810	225628	239826
4	Mapakada	Dambarawa	15.9	607	228322	233869
5	Mapakada	Mapakada	9.5	607	228464	230120
6	Mapakada	Morana	16.5	527	242419	230844
7	Badulla	Ambewala	2.4	407	203514	186546
Medium						
8	Mapakada	Demodara	2.3	182	243295	225788
9	Mapakada	Dehigama	2.2	101	246183	230447
10	Badulla	Bomuruella	1.36	No separate Irrigable area Feed Uma ela	203687	196093
Total			102.46	5,872		

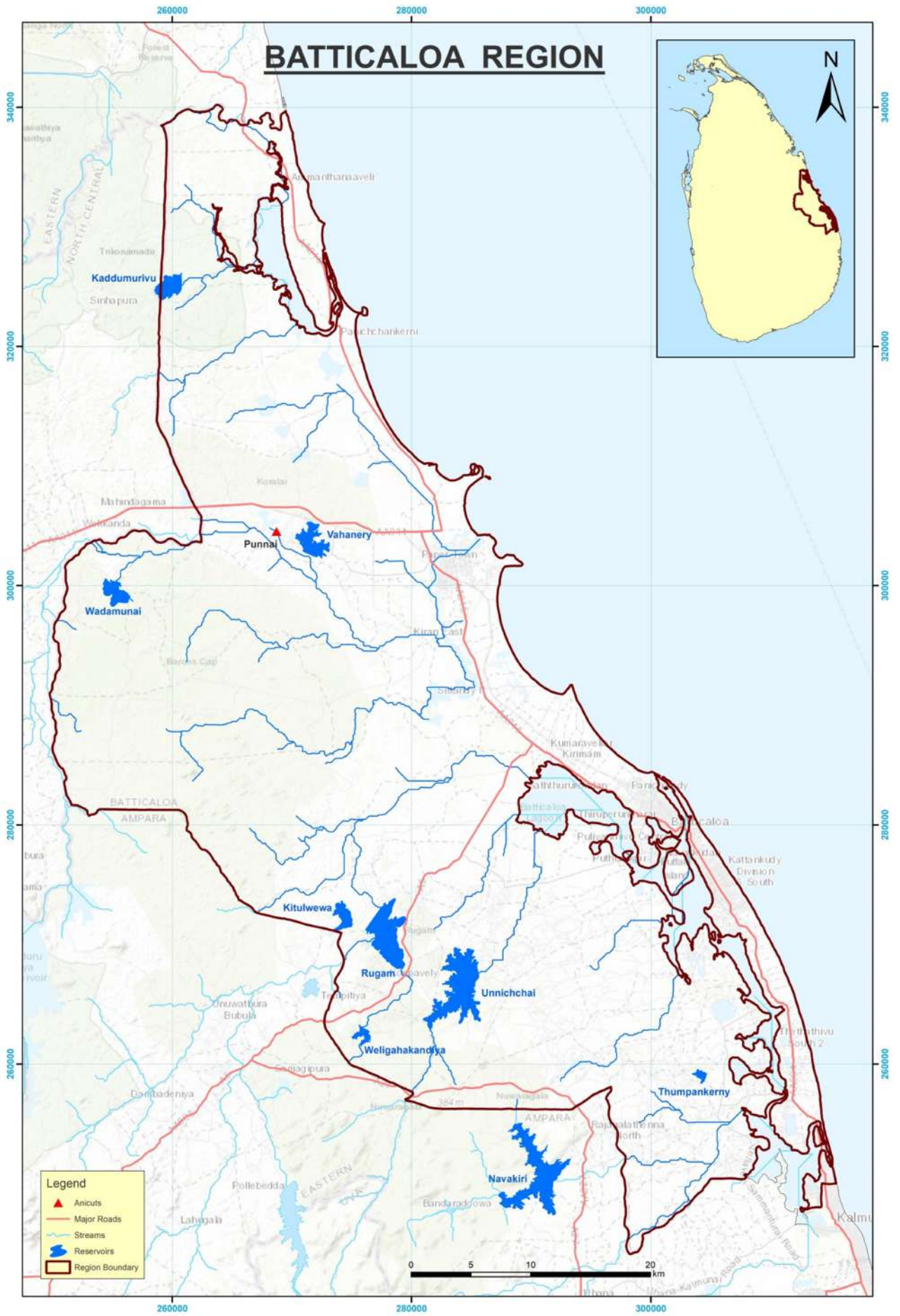
Anicuts

No.	Division	Name of Scheme	Irrigable Extent (ha.)	Co-ordinates	
				X	Y
Major					
1	Kandeketiya	Komarika Ela	850	235202	211920
2	Badulla	Uma Ela	812	207804	193234
3	Kandeketiya	Badulu Oya	718	227391	214490

Anicuts

No.	Division	Name of Scheme	Irrigable Extent (ha.)	Co-ordinates	
				X	Y
Medium					
4	Kandeketiya	Bathmedilla	567	220883	208370
5	Mapakada	Diyabana Oya	324	231788	239266
6	Badulla	Maha Eliya	219	217175	179580
7	Badulla	Mathatilla	202	219933	185602
8	Badulla	Taldena	142	231820	205275
9	Badulla	Dambawinna	101	214677	188821
Total			3,935		

Total No. of Reservoirs	10
Total No. of Anicuts	9
Total Irrigable Extent (ha.)	9,807



Irrigation Schemes in Batticaloa Region

[Conversion Factors: 1 ha = 2.471 Acs & 1 MCM = 810.71 Acs.ft.]

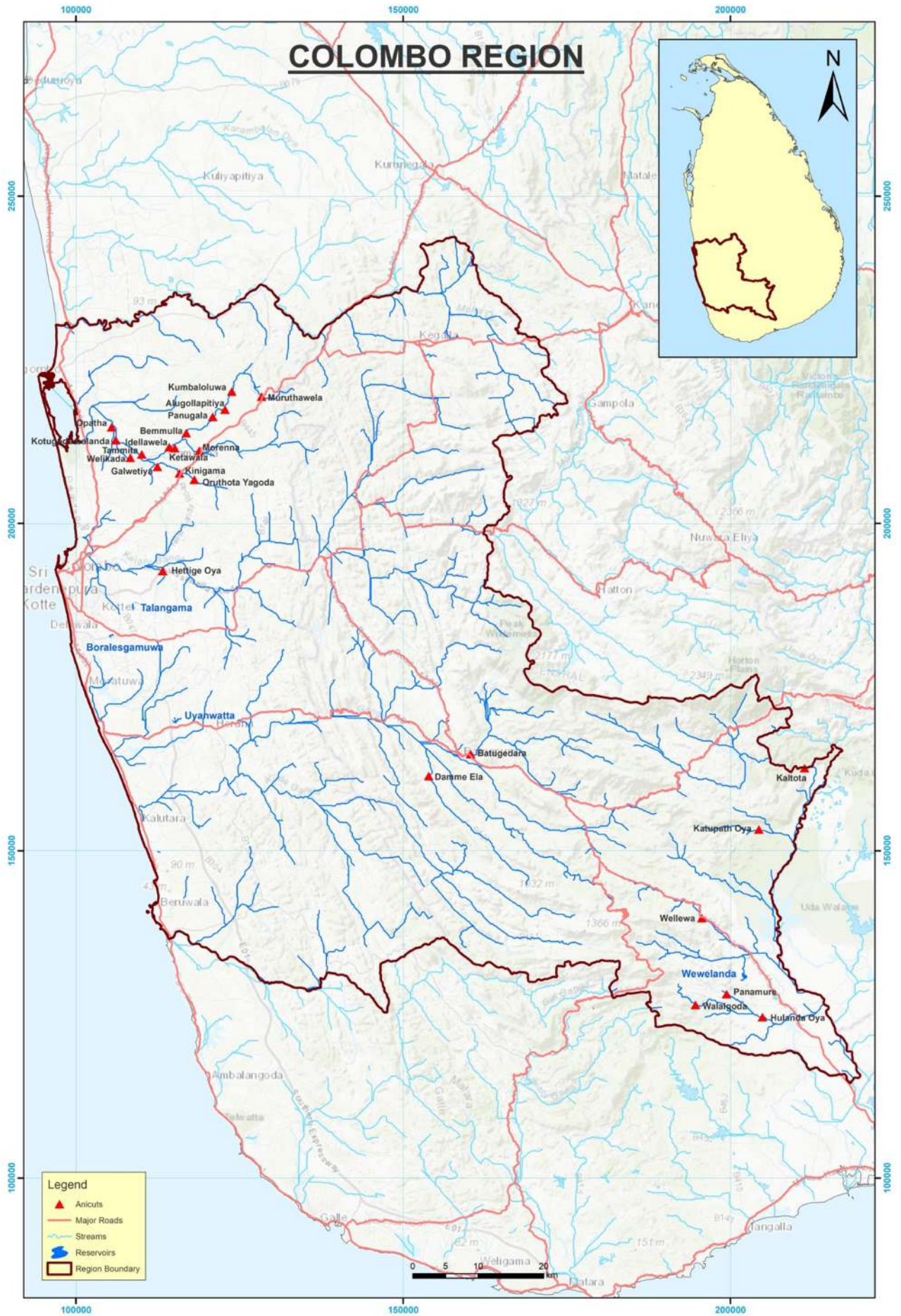
Reservoirs

No.	Division	Name of Scheme	Capacity at FSL (MCM)	Irrigable Extent (ha.)	Co-ordinates	
					X	Y
Major						
1	Navakiri	Navakiri	65.4	7,446	293292	252055
2	Rugam	Unnichchai	67.9	6,228	285599	268518
3	Rugam	Vahanery	16.7	3,983	272090	302394
4	Rugam	Rugam	22.9	3,947	276073	271153
5	Rugam	Kaddumurivu	5.8	445	260843	326090
6	Rugam	Kitulwewa	5.2	405	274856	272745
Medium						
7	Navakiri	Thumpankerny	1.5	271	304661	259174
8	Rugam	Wadamunai	5.6	214	254722	300539
9	Rugam	Weligahakandiya	1.8	186	275733	263162
Total			192.8	23,125		

Anicuts

No.	Division	Name of Scheme	Irrigable Extent (ha.)	Co-ordinates	
				X	Y
Major					
1	Rugam	Punanai	1,204	268705	304546
Total			1,204		

Total No. of Reservoirs	9
Total No. of Anicuts	1
Total Irrigable Extent (ha.)	24,329



Irrigation Schemes in Colombo Region

[Conversion Factors: 1 ha = 2.471 Acs & 1 MCM = 810.71 Acs.ft.]

Reservoirs

No.	Division	Name of Scheme	Capacity at FSL (MCM)	Irrigable Extent (ha.)	Co-ordinates	
					X	Y
Medium						
1	Kalutara	Uyanwatta	0.68	142	115386	169620
2	Ratnapura	Wewelanda	1.3	103	202100	133080
3	Colombo	Boralesgamuwa	0.17	94	105054	182708
4	Colombo	Talangama	0.06	85	108969	187679
Total			2.21	424		

Anicuts

No.	Division	Name of Scheme	Irrigable Extent (ha.)	Co-ordinates	
				X	Y
Major					
1	Ratnapura	Kaltota	915	211314	162638
2	Colombo	Hettige Oya	688	113259	192757
3	Ratnapura	Panamura	456	199400	128110
4	Gampaha	Welikada	407	108285	210034
5	Ratnapura	Katupath Oya	405	204322	153260

Anicuts

No.	Division	Name of Scheme	Irrigable Extent (ha.)	Co-ordinates	
				X	Y
Medium					
6	Gampaha	Ketawela	397	115103	211518
7	Gampaha	Kinigama	389	118079	206697
8	Gampaha	Morena	326	118848	211123
9	Gampaha	Oruthota Yagoda	289	112443	208675
10	Gampaha	Panugala	235	120887	216305
11	Gampaha	Muruthawela	229	128360	219384
12	Ratnapura	Walalgoda	223	194638	126460
13	Gampaha	Kumbaloluwa	174	123806	220176
14	Ratnapura	Damme Ela	144	153881	161415
15	Ratnapura	Wellewa	140	195596	139720
16	Gampaha	Idallawala	119	114235	211676
17	Gampaha	Thammita	111	110048	210561
18	Ratnapura	Hulanda Oya	99	204879	124594
19	Gampaha	Galwetiya	97	115815	207689
20	Ratnapura	Batugedara	87	162593	162748
21	Gampaha	Alugollapitiya	81	122752	217413
22	Gampaha	Bemmulla- Dorannagoda	65	116853	213818
23	Gampaha	Opatha	45	105431	214720
24	Gampaha	Kotugoda Bolanda	24	106055	212719
Total			6,145		

Drainage Schemes

No	Division	Name of Scheme	Irrigable Extent (ha.)
1	Kalutara	Bolgoda	2,424
2	Kalutara	Kalu Ganga LB	1,530
3	Kalutara	Kalu Ganga RB	1,506
4	Kalutara	Benthara RB	830
5	Kalutara	Kaluwamodara	647
6	Kalutara	Dummalamodara	607
Total			7,544

Total No. of Reservoirs	4
Total No. of Anicuts	24
Drainage Schemes	6
Total Irrigable Extent (ha.)	14,113



Irrigation Schemes in Galle Region

[Conversion Factors: 1 ha = 2.471 Acs & 1 MCM = 810.71 Acs.ft.]

Reservoirs

No	Division	Name of Scheme	Capacity at FSL (MCM)	Irrigable Extent (ha.)	Co-ordinates	
					X	Y
Major						
1	Matara	Ellawela Wewa	1.0	528	180159	100041
2	Matara	Kekanadura Wewa	2.8	445	180160	86657
Medium						
3	Matara	Denagama Wewa	1.3	343	185609	101301
4	Ambalangoda	Aluthpahala Kepu Ela (Kumburuhena Wewa)	0.07	194	144627	116657
5	Matara	Lenabatuwa Wewa (Hali Ela Scheme)	3.8	100	174398	98405
6	Matara	Uyanwewa	0.22	98	188893	98381
7	Matara	Nape Udawathura Wewa	0.23	81	167251	92265
Total			9.42	1,789		

Anicuts

No	Division	Name of Scheme	Irrigable Extent (ha.)	Co-ordinates	
				X	Y
Major					
1	Ginganga	Holuwagoda	720	136976	100219
2	Matara	Urapola	626	176033	94168
Medium					
3	Matara	Pettara Anicut	317	175926	90849
4	Matara	Diyalaphe Anicut	283	164621	102084
5	Matara	Hamaragoda Anicut	144	180938	92458
6	Matara	Dediyagala Anicut	142	160939	106428
7	Matara	Alawathugoda Anicut	136	174952	90308
8	Matara	Sapugoda Anicut	125	176301	98320
Total			2,493		

Lift Irrigation Schemes

No	Division	Name of Scheme	Irrigable Extent (ha.)
01	Matata	Akuressa (Panadugama)	486
Total			486

Drainage Schemes

No.	Division	Name of Scheme	Irrigable Extent (ha.)
1	Matara	Kiralakele	2,023
2	Matara	Kadawedduwa	2,023
3	Ambalangoda	Ranthotuwila	850
4	Ambalangoda	Elpitiya Ela	813
5	Ambalangoda	Dedduwa	809
6	Ginganga	Hegoda	675
7	Matara	Kadduwa	526
8	Ambalangoda	Uragasela	356
9	Ginganga	Indigasketiya	320
10	Ginganga	Divithura	153
11	Ginganga	Mahimulla	149
12	Ginganga	Ganegama	135
13	Ginganga	Kiribathawila	132
14	Ambalangoda	Uthurupitigala	103
15	Ambalangoda	Uhanowita	101
16	Ginganga	Halpathota	83
17	Ginganga	Agaliya	73
18	Ginganga	Hammeliya	44
19	Ginganga	Akuretiya	42
Total			9,410

Total No. of Reservoirs	7
Total No. of Anicuts	8
Drainage Schemes	19
Lift Irrigation Schemes	1
Total Irrigable Extent (ha.)	14,178

Irrigation Schemes in Hambantota Region

[Conversion Factors: 1 ha = 2.471 Acs & 1 MCM = 810.71 Acs.ft.]

Reservoirs

No	Division	Name of Scheme	Capacity at FSL (MCM)	Irrigable Extent (ha.)	Co-ordinates	
					X	Y
Major						
1	Tissamaharama	Lunugamvehera	226.7	5,463	251151	130231
2	Hambantota	Ridiyagama (Walawa LB)	32.1	3,439	225082	111984
3	Hambantota	Mau Ara	41.0	Gravity 1538	220882	137445
				Lift 1821		
4	Weerakatiya	Muruthawela	48.0	1,791	195206	113270
5	Tissamaharama	Yodawewa	10.3	1,416	259385	118120
6	Tissamaharama	Tissa Wewa	4.3	1,113	257285	120957
7	Tissamaharama	Weerawila	14.4	1,052	251678	121994
8	Tissamaharama	Bandagiriya	11.2	708	241514	117968
9	Weerakatiya	Kakirioboda	2.7	*	188002	111079
10	Tissamaharama	Weheragala	75.2	*	254575	148861
Medium						
11	Tissamaharama	Debarawewa	1.0	382	255008	122547
12	Weerakatiya	Udukiriwila Wewa	4.0	294	199413	107457
13	Tissamaharama	Pannegamuwa	1.2	267	252098	123535
14	Hambantota	Maha Aluthgama Arawewa	2.2	223	234726	129216
15	Hambantota	Mahagalwewa	3.4	139	229766	132570
16	Hambantota	Pallemattala	1.3	152	237490	124185
17	Hambantota	Pahala Andarawewa	1.7	85	235315	124254
18	Hambantota	Ranmuduwewa	0.8	85	233612	128864
19	Weerakatiya	Kiramawewa	1.4	*	185540	113274
Total			482.9	18,147**		

* Not a Scheme. Only Storage Reservoir. Total Irrigable Extent of kekirioboda and Kirama Wewa is 2591 ha.

** Lift irrigable extent is not included

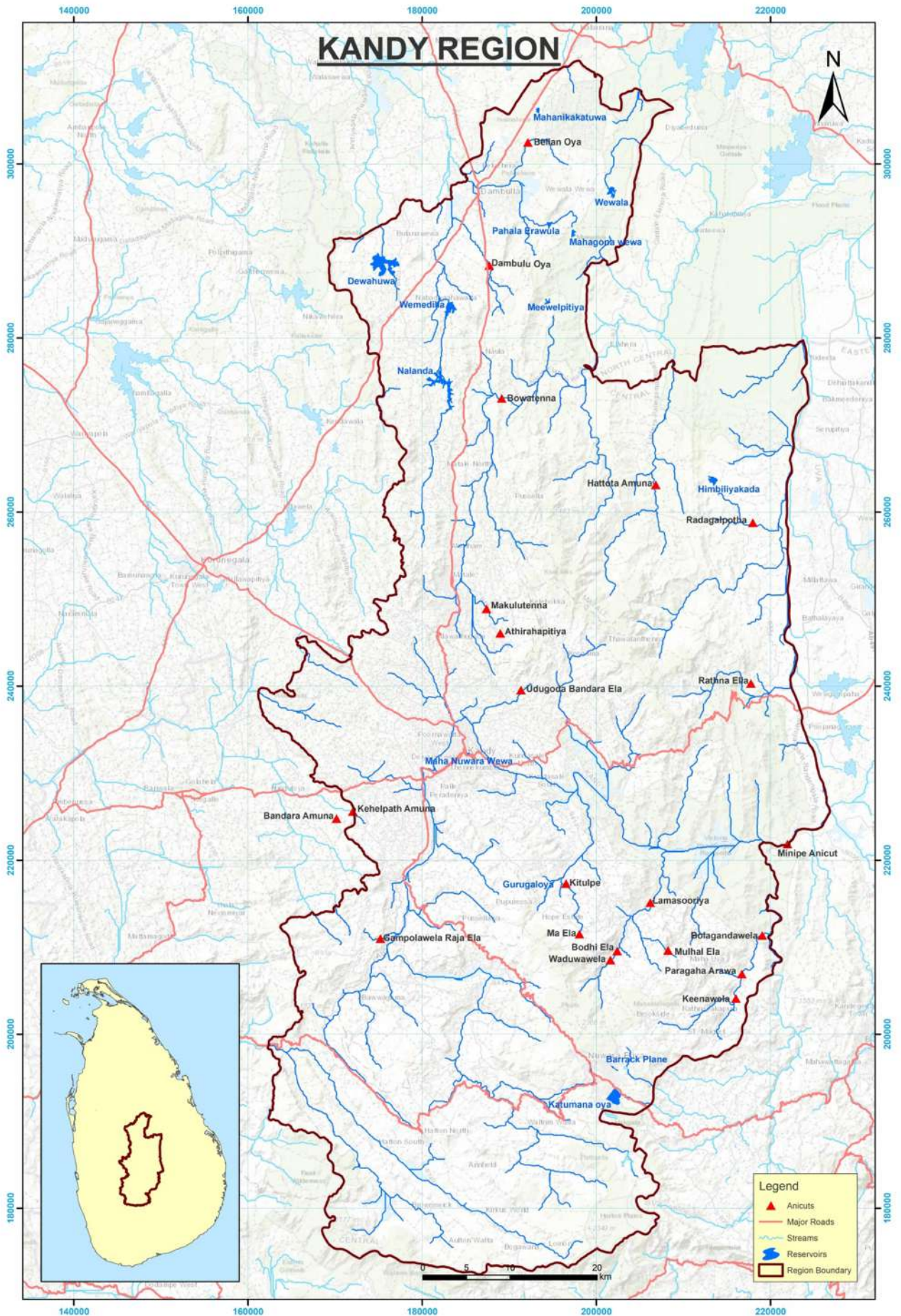
Anicuts

No	Division	Name of Scheme	Irrigable Extent (ha.)	Co-ordinates	
				X	Y
Major					
1	Hambantota	Liyangastota (Walawa RB)	3,440	219059	115396
2	Weerakatiya	Kirama Oya	2,591	186478	113025
3	Weerakatiya	Uruboku Oya	2,445	196281	111291
Medium					
4	Tissamaharama	Gemunupura	142	253095	126235
5	Weerakatiya	Kongal Ara	132	191040	97272
Total			8,750		

Lift Irrigation Schemes

No.	Division	Name of Scheme	Irrigable Extent (ha.)
1	Tissamaharama	Ranminithenna	2.8
2	Hambantota	Mahagal Wewa	1.8
3	Hambantota	Mau Ara	1,821
Total			1,825.6

Total No. of Reservoirs	19
Total No. of Anicuts	5
Lift Irrigation Schemes	3
Total Irrigable Extent (ha.)	28,723



Irrigation Schemes in Kandy Region

[Conversion Factors: 1 ha = 2.471 Acs & 1 MCM = 810.71 Acs.ft.]

Reservoirs

No	Division	Name of Scheme	Capacity at FSL(MCM)	Irrigable Extent (ha.)	Co-ordinates	
					X	Y
Major						
1	Dambulla	Dewahuwa	13.6	1,214	174617	289513
2	Dambulla	Wemedilla	5.7	809	182897	284037
3	Kandy	Gurugaloya	0.158	486	194964	217449
4	Dambulla	Nalanda	15.9	*	183463	274043
Medium						
5	Minipe	Himbiliyakada	2.3	155	213354	264059
6	Dambulla	Pahala Erawula	0.42	142	194518	292579
7	Dambulla	Wewala	1.7	97	201184	296598
8	Dambulla	Mahanikakatuwa	0.19	87	193448	306445
9	Matale	Meewelpitiya	0.42	85	194575	283986
10	Kandy	Maha Nuwara Wewa	0.87	**	184957	232126
11	Nuwara Eliya	Barrack Plane	0.125	***	202499	195820
12	Nuwara Eliya	Katumana Oya	0.016	****	202132	192548
Total			41.399	3,075		

* No separate irrigable area, Only feeds Dewahuwa & Wemedilla.

** No separate irrigable area, Maintained for elegance of Kandy city & Historical value.

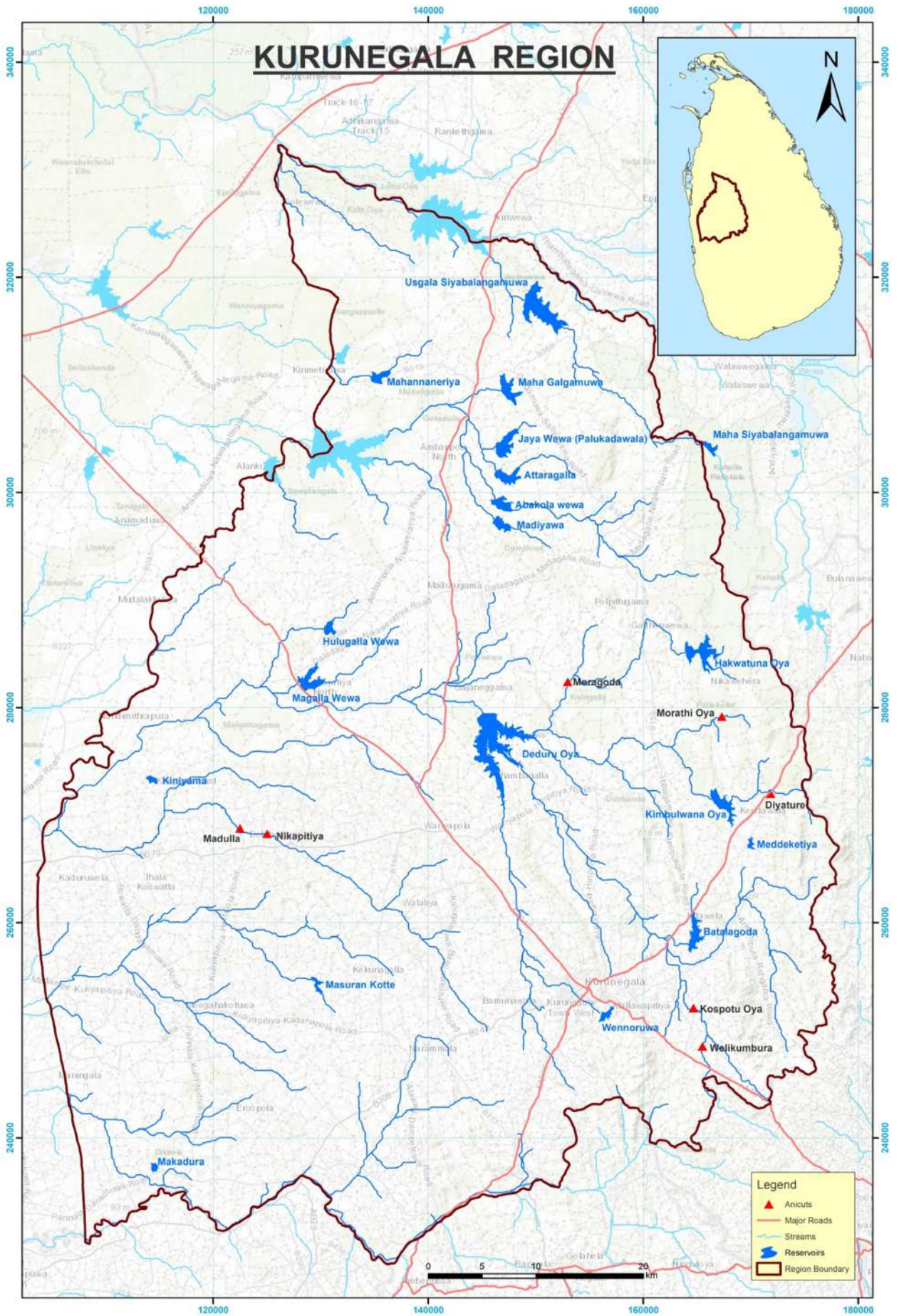
*** No separate irrigable area, Feeds Uma Ela scheme through Bomuruella Tank.

**** No separate irrigable area, Irrigate vegetable cultivation & maintained for elegance of the Nuwara Eliya town.

Anicuts

No	Division	Name of Scheme	Irrigable Extent (ha.)	Co-ordinates	
				X	Y
Major					
1	Minipe	Minipe LB (Yoda Ela)	7,987	221935	221868
2	Kandy	Ma Ela	654	198052	211513
3	Matale	Hattota Amuma	448	206822	263154
Medium					
4	Dambulla	Dambulu Oya	243	187704	288351
5	Nuwara Eliya	Mulhal Ela	208	208230	209646
6	Nuwara Eliya	Waduwwela	194	202120	208888
7	Kandy	Lamasooriya	186	206776	215335
8	Kandy	Gampolawela Raja Ela	164	175196	210989
9	Kandy	Udugoda Bandara Ela	164	191340	239558
10	Kandy	Bodhi Ela	154	202093	208839
11	Nuwara Eliya	Bolagandawela	144	219045	211376
12	Kandy	Kithulpe	137	196512	217318
13	Matale	Bowatenna	134	189125	273070
14	Nuwara Eliya	Paragaha Arawa	132	216713	206935
15	Matale	Makuletenna	121	187379	248887
16	Minipe	Rathna Ella	110	217742	240323
17	Nuwara Eliya	Keenawela	102	216019	204109
18	Kandy	Kehelpath Amuna	100	172036	225605
19	Kandy	Bandara Amuna	97	170157	224790
20	Dambulla	Bellan Oya	87	192138	302490
21	Minipe	Radagalpotha	86	217963	258786
22	Matale	Athirahapitiya	85	188960	246192
Total			11,737		

Total No. of Reservoirs	12
Total No. of Anicuts	22
Total Irrigable Extent (ha.)	14,812



Irrigation Schemes in Kurunegala Region

[Conversion Factors: 1 ha = 2.471 Acs & 1 MCM = 810.71 Acs.ft.]

Reservoirs

No	Division	Name of Scheme	Capacity at FSL (MCM)	Irrigable Extent (ha.)	Co-ordinates	
					X	Y
Major						
1	Hiriyala	Batalagoda	6.3	3,090	164288	257285
2	Nikaweratiya	Magalla Wewa	9.2	2,833	129374	281674
3	Wariyapola	Deduru Oya	75.2	2,630	144454	278952
4	Hiriyala	Hakwatuna Oya	24.3	2,579	164031	284588
5	Hiriyala	Kimbulwana Oya	8.5	992	166583	271100
6	Galgamuwa	Jaya Wewa (Palukadawala)	9.5	971	146299	303648
7	Galgamuwa	Usgala Siyabalangamuwa	26.7	850	148729	317294
8	Nikaweratiya	Madiyawa	3.2	583	146038	297072
9	Galgamuwa	Attaragalla	4.5	419	146391	301237
Medium						
10	Galgamuwa	Abakola Wewa	8.3	340	145993	299295
11	Katugampola	Makadura	0.5	304	114400	276766
12	Hiriyala	Wennoruwa	1.8	190	156299	250867
13	Galgamuwa	Maha Galgamuwa	8.0	170	146859	309371
14	Galgamuwa	Maha Siyabalangamuwa	3.2	166	165587	304356
15	Galgamuwa	Mahannaneriya	2.5	161	134764	310313
16	Katugampola	Kiniyama	0.9	132	114865	273168
17	Katugampola	Masuran Kotte	0.68	111	129286	254517
18	Hiriyala	Meddeketiya	0.81	98	170235	266818
19	Nikaweratiya	Hulugalla Wewa	1.8	97	130445	286792
Total			195.89	16,716		

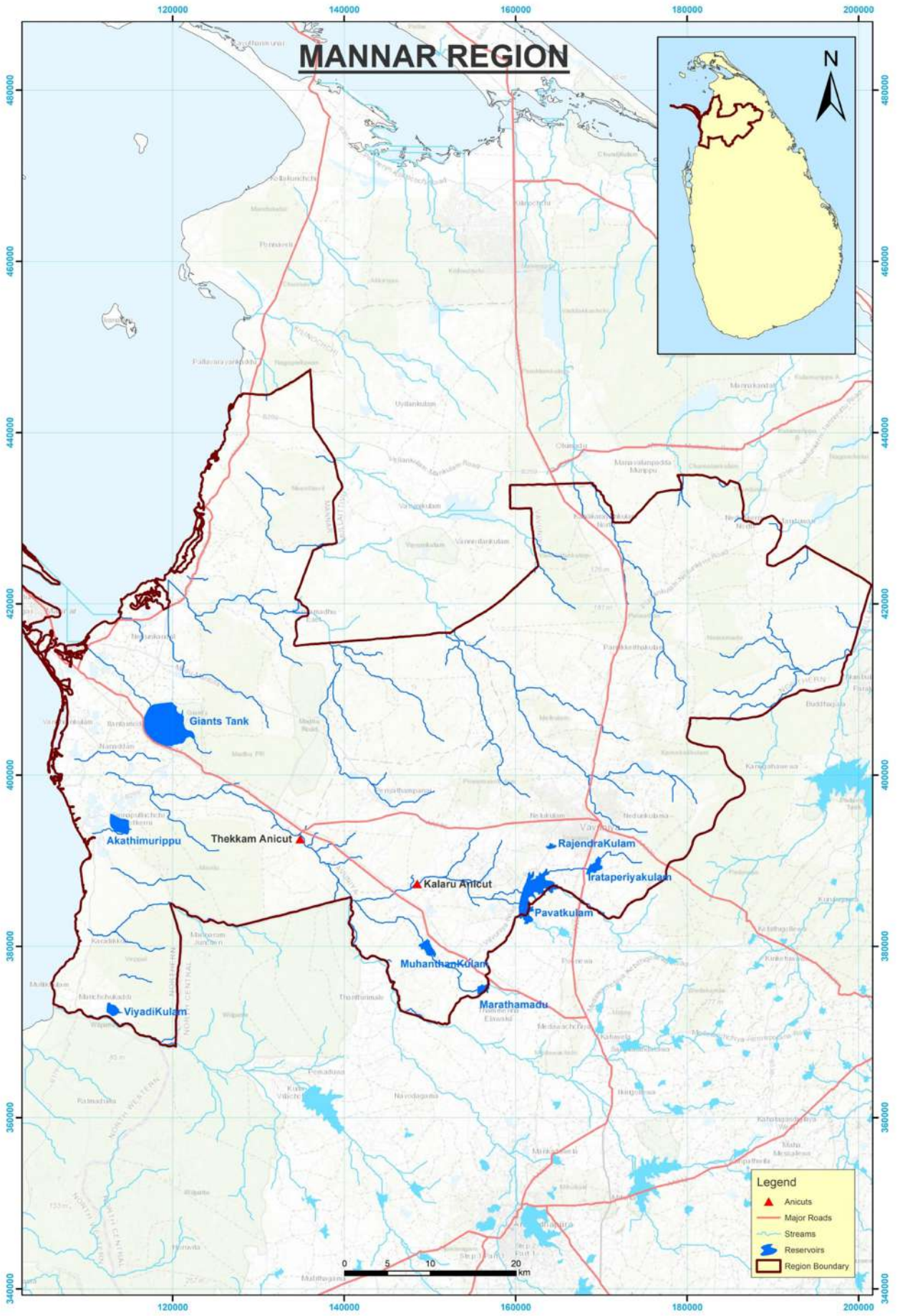
Anicuts

No	Division	Name of Scheme	Irrigable Extent (ha.)	Co-ordinates	
				X	Y
Medium					
1	Hiriyala	Diyature	231	171843	272014
2	Hiriyala	Moragoda	223	152961	282405
3	Hiriyala	Kospotu Oya	116	164654	252073
4	Hiriyala	Welikumbura	115	165499	248514
5	Hiriyala	Morathi Oya	100	167303	279173
6	Katugampola	Madulla	140	122456	268678
7	Katugampola	Nikapitiya	91	125270	268024
Total			1,016		

Lift Irrigation Schemes

No	Division	Name of Scheme	Irrigable Extent (ha.)
1	Hiriyala	Kalugalla	85
2	Katugampola	Wellangiriya	81
Total			166

Total No. of Reservoirs	19
Total No. of Anicuts	7
Lift Irrigation Schemes	2
Total Irrigable Extent (ha.)	17,898



Irrigation Schemes in Mannar Region

[Conversion Factors: 1 ha = 2.471 Acs & 1 MCM = 810.71 Acs.ft.]

Reservoirs

No	Division	Name of Scheme	Capacity at FSL (MCM)	Irrigable Extent (ha.)	Co-ordinates	
					X	Y
Major						
1	Murunkan	Giants Tank	38.2	12,683	120294	402947
2	Silawathura	Akathimurippu	9.4	2,570	114680	393038
3	Vauniya	Pavatkulam	33.3	1,673	160263	384208
4	Silawathura	Viyadikulam	2.2	628	114228	372206
Medium						
5	Vauniya	Muhanthankulam	3.0	342	148597	380164
6	Vauniya	Irataperiyakulam	4.4	250	168118	388287
7	Vauniya	Marathamadu	1.9	177	155599	374325
8	Vauniya	Rajendrakulam	1.0	119	164689	391549
Total			93.4	18,442		

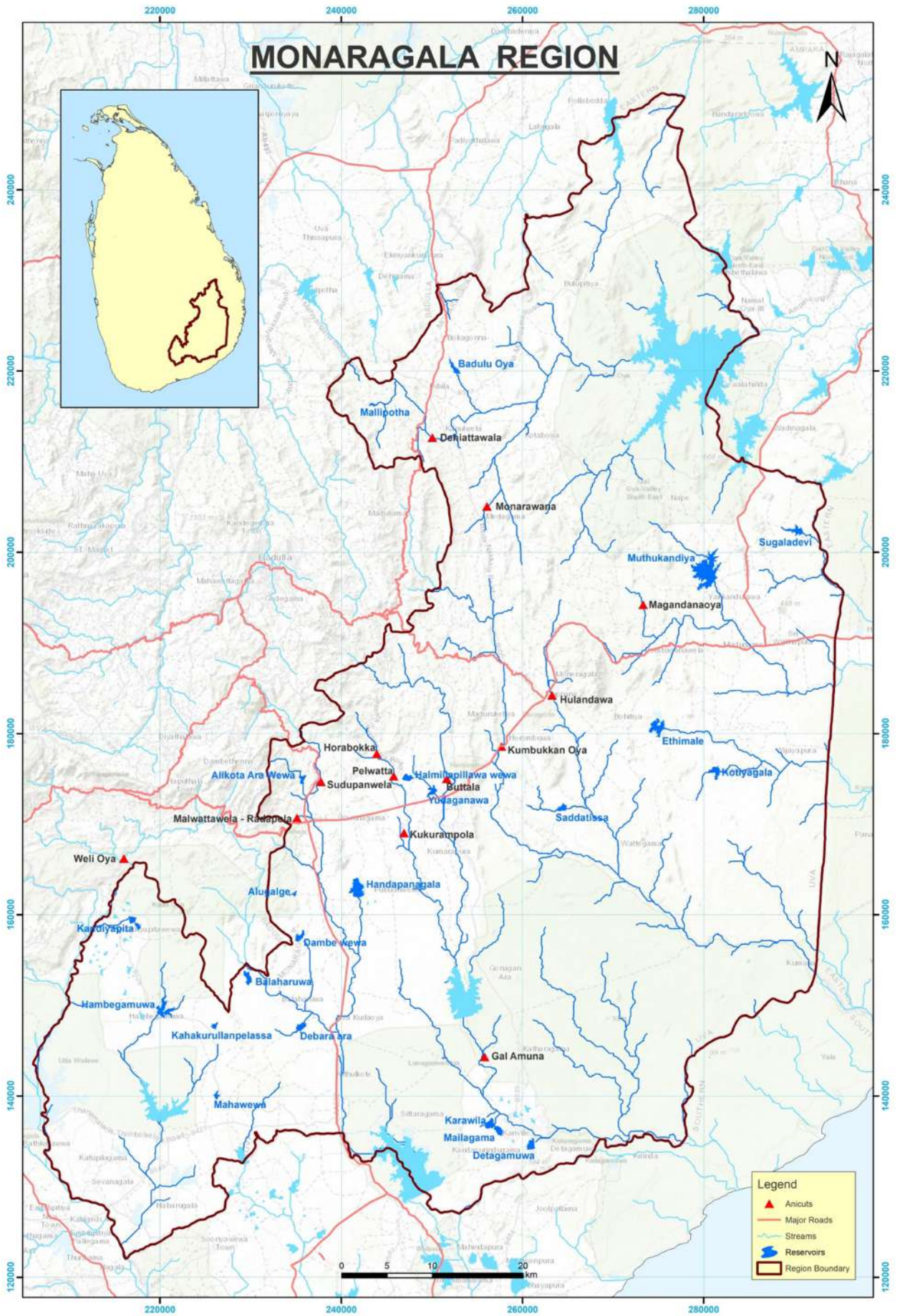
Anicuts

No	Division	Name of Scheme	Irrigable Extent (ha.)	Co-ordinates	
				X	Y
Medium					
1	Vauniya	Kalaru Anicut	243	147747	387073
2	Murunkan	Thekkam Anicut	Feeds Giants tank & Akathimurupu tank	134856	392519
Total			243		

Total No. of Reservoirs 8

Total No. of Anicuts 2

Total Irrigable Extent (ha.) 18,685



Irrigation Schemes in Monaragala Region

[Conversion Factors: 1 ha = 2.471 Acs & 1 MCM = 810.71 Acs.ft.]

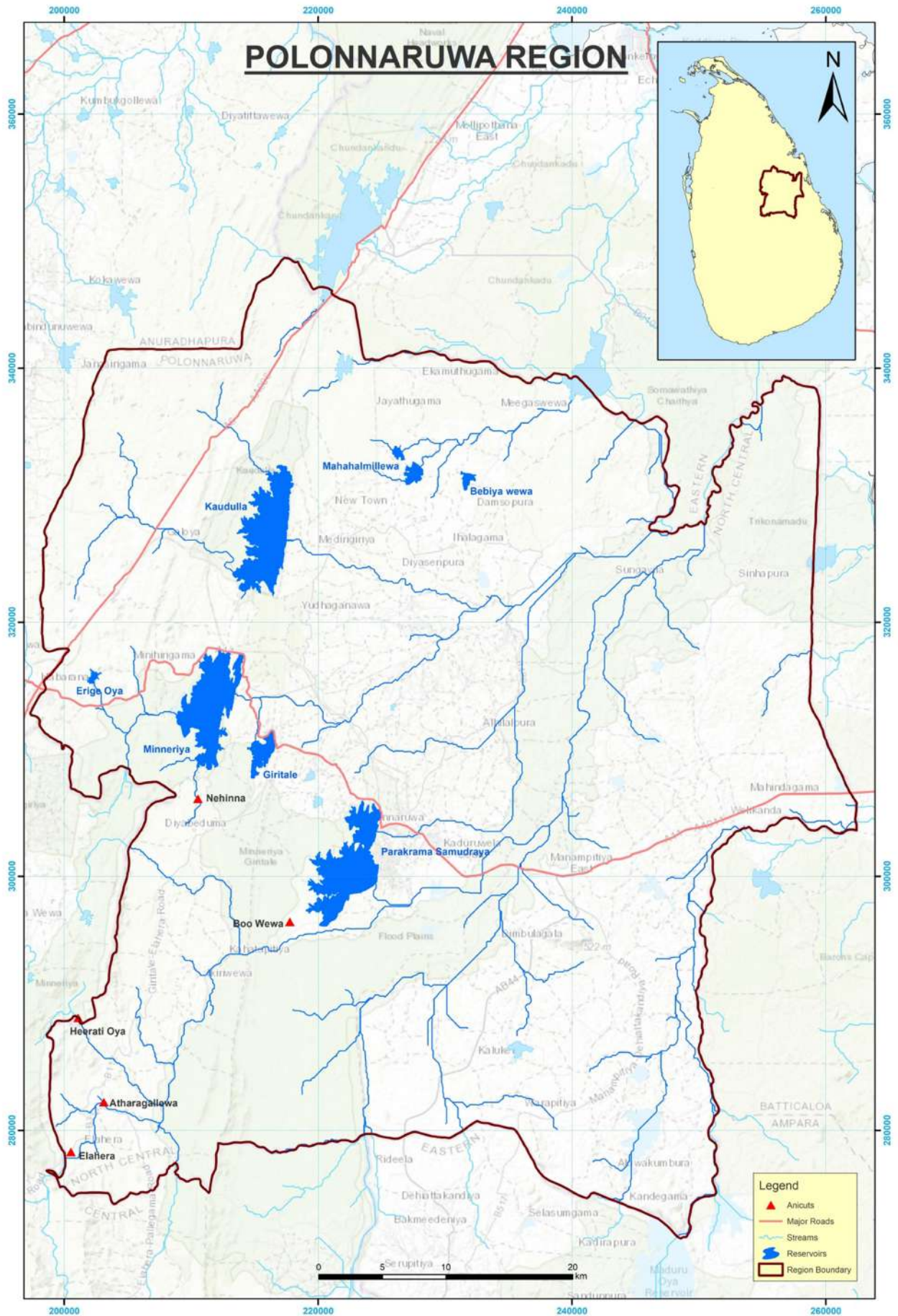
Reservoirs

No	Division	Name of Scheme	Capacity at FSL (MCM)	Irrigable Extent (ha.)	Co-ordinates	
					X	Y
Major						
1	Monaragala	Muthukandiya	30.3	809	281561	197128
2	Wellawaya	Handapanagala	18.25	688	242761	162420
3	Monaragala	Ethimale	6.8	406	275713	181410
Medium						
4	Wellawaya	Alikota Ara Wewa	6.5	*	236013	174459
5	Weli oya	Hambegamuwa	5.1	238	220202	148725
6	Bibile	Badulu Oya	2.7	214	253148	219655
7	Monaragala	Yudaganawa	1.9	184	250590	173663
8	Wellawaya	Balaharuwa	1.08	184	229901	153346
9	Monaragala	Kotiyagala	2.6	182	281790	176042
10	Monaragala	Saddatissa	1.4	171	264935	171978
11	Welioya	Kandiyapita	1.5	165	217479	158347
12	Wellawaya	Dambe Wewa	1.4	132	235964	157802
13	Wellawaya	Halmillapillawa Wewa	2.5	109	248139	175024
14	Wellawaya	Mailagama	0.42	107	258988	135194
15	Welioya	Kahakurullan Pelassa	0.48	101	225795	147452
16	Wellawaya	Debara Ara	1.2	85	235683	148180
17	Welioya	Mahawewa	0.78	81	235713	133087
18	Wellawaya	Karawila	0.42	75	256736	137473
19	Monaragala	Sugaladevi	2.9	72	290931	202527
20	Wellawaya	Alugalge	0.74	69	235028	162380
21	Wellawaya	Detagamuwa	1.01	66	261195	135344
22	Bibile	Mallipotha	0.91	0	243667	216415
Total			90.89	4,138		

Anicuts

No	Division	Name of Scheme	Irrigable Extent (ha.)	Co-ordinates	
				X	Y
Major					
1	Monaragala	Kumbukkan Oya	850	257668	178586
2	Monaragala	Buttala	811	251628	175019
3	Welioya	Weli Oya	656	216006	166218
Medium					
4	Bibile	Dehiattawela	300	249984	212652
5	Wellawaya	Gal Amuna Anicut	283	255806	144319
6	Wellawaya	Kukurampola	223	246658	169433
7	Wellawaya	Pelwatta	172	245784	175299
8	Wellawaya	Sudupanawela	156	237744	178683
9	Wellawaya	Horabokka	142	243907	177770
10	Wellawaya	Malwattawela - Radapola	132	234948	170521
11	Bibile	Monarawana	93	255271	204105
12	Monaragala	Hulandawa	91	263269	184228
13	Bibile	Magandanaoya	81	273310	194195
Total			3,990		

Total No. of Reservoirs	22
Total No. of Anicuts	13
Total Irrigable Extent (ha.)	8,128



Irrigation Schemes in Polonnaruwa Region

[Conversion Factors: 1 ha = 2.471 Acs & 1 MCM = 810.71 Acs.ft.]

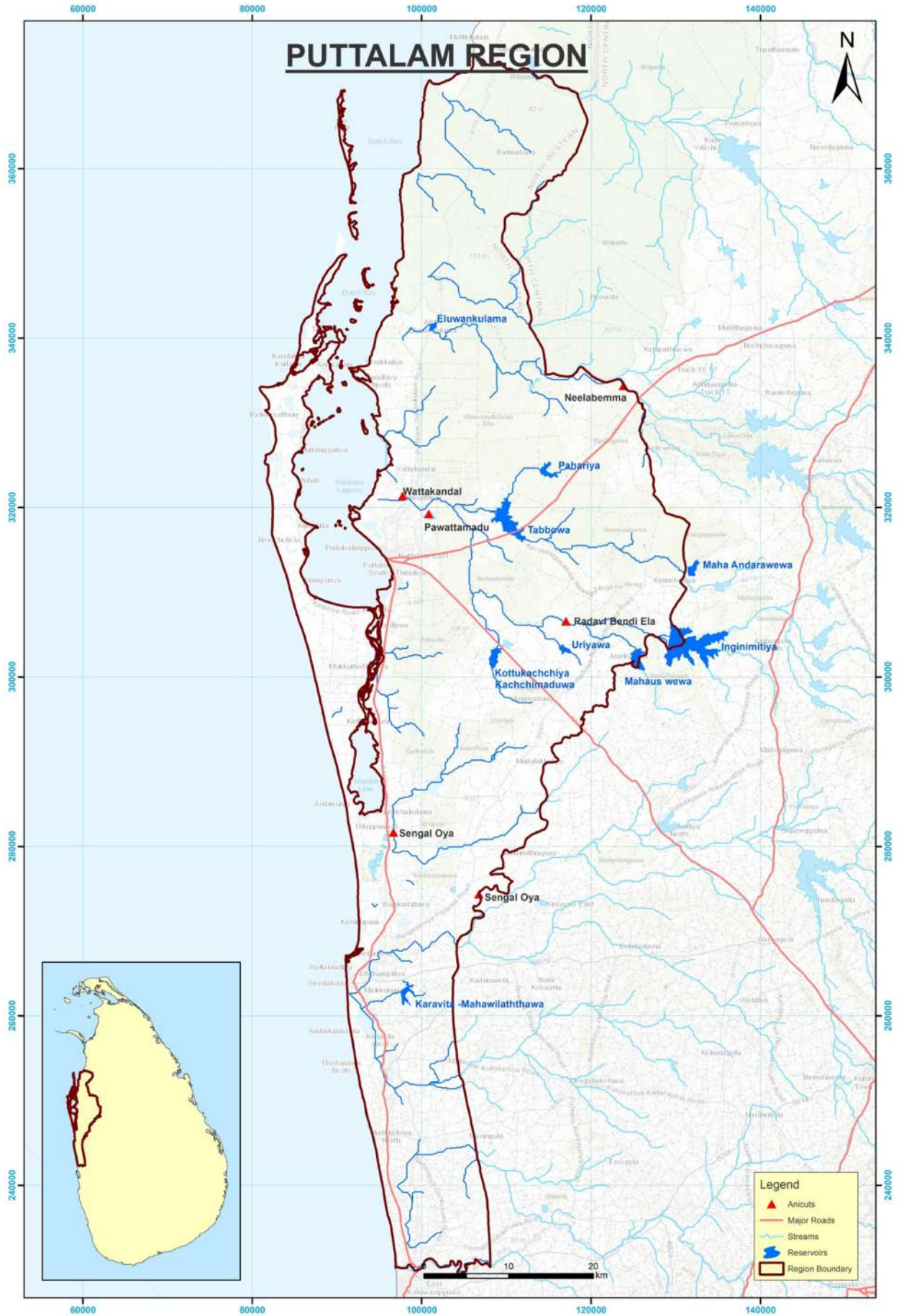
Reservoirs

No.	Division	Name of Scheme	Capacity at FSL (MCM)	Irrigable Extent (ha.)	Co-ordinates	
					X	Y
Major						
1	Polonnaruwa	Parakrama Samudraya	143.2	10,193	224671	304157
2	Minneriya	Minneriya	135.7	9,096	214079	315708
3	Kaudulla	Kaudulla	128.3	5,869	218086	331048
4	Minneriya	Giritale	27	3,076	216603	310319
Medium						
5	Kaudulla	Mahahalmillewa	1.1	152	226515	333945
6	Kaudulla	Bebiya Wewa	1.6	93	231267	331904
7	Minneriya	Erige Oya	1.3	91	201996	315152
Total			438.2	28,570		

Anicuts

No.	Division	Name of Scheme	Irrigable Extent (ha.)	Co-ordinates	
				X	Y
Major					
1	Elahera	Elahera – System G	6,677	200525	278320
Medium					
2	Elahera	Nehinna	330	210580	306555
3	Elahera	Atharagallewa	243	201979	279616
4	Polonnaruwa	Boo Wewa	134	217762	296408
5	Elahera	Heerati Oya	86	201087	288865
Total			7,470		

Total No. of Reservoirs	7
Total No. of Anicuts	5
Total Irrigable Extent (ha.)	36,040



Irrigation Schemes in Puttalam Region

[Conversion Factors: 1 ha = 2.471 Acs & 1 MCM = 810.71 Acs.ft.]

Reservoirs

No	Division	Name of Scheme	Capacity at FSL (MCM)	Irrigable Extent (ha.)	Co-ordinates	
					X	Y
Major						
1	Inginimitiya	Inginimitiya	72.6	2,430	128940	302999
2	Puttalam	Tabbowa	19.0	847	108198	318378
Medium						
3	Puttalam	Karavita - Mahawilaththawa	2.7	400	98055	261240
4	Puttalam	Kottukachchiya – Kachchimaduwa	3.3	388	108523	303306
5	Inginimitiya	Mahaus Wewa	4.2	364	125202	303171
6	Puttalam	Eluwankulama	0.3	220	101466	341102
7	Inginimitiya	Maha Andarawewa	2.2	152	131525	311972
8	Puttalam	Pahariya	2.2	146	113969	324185
9	Inginimitiya	Uriyawa	1.3	119	116175	303505
Total			107.8	5,066		

Anicuts

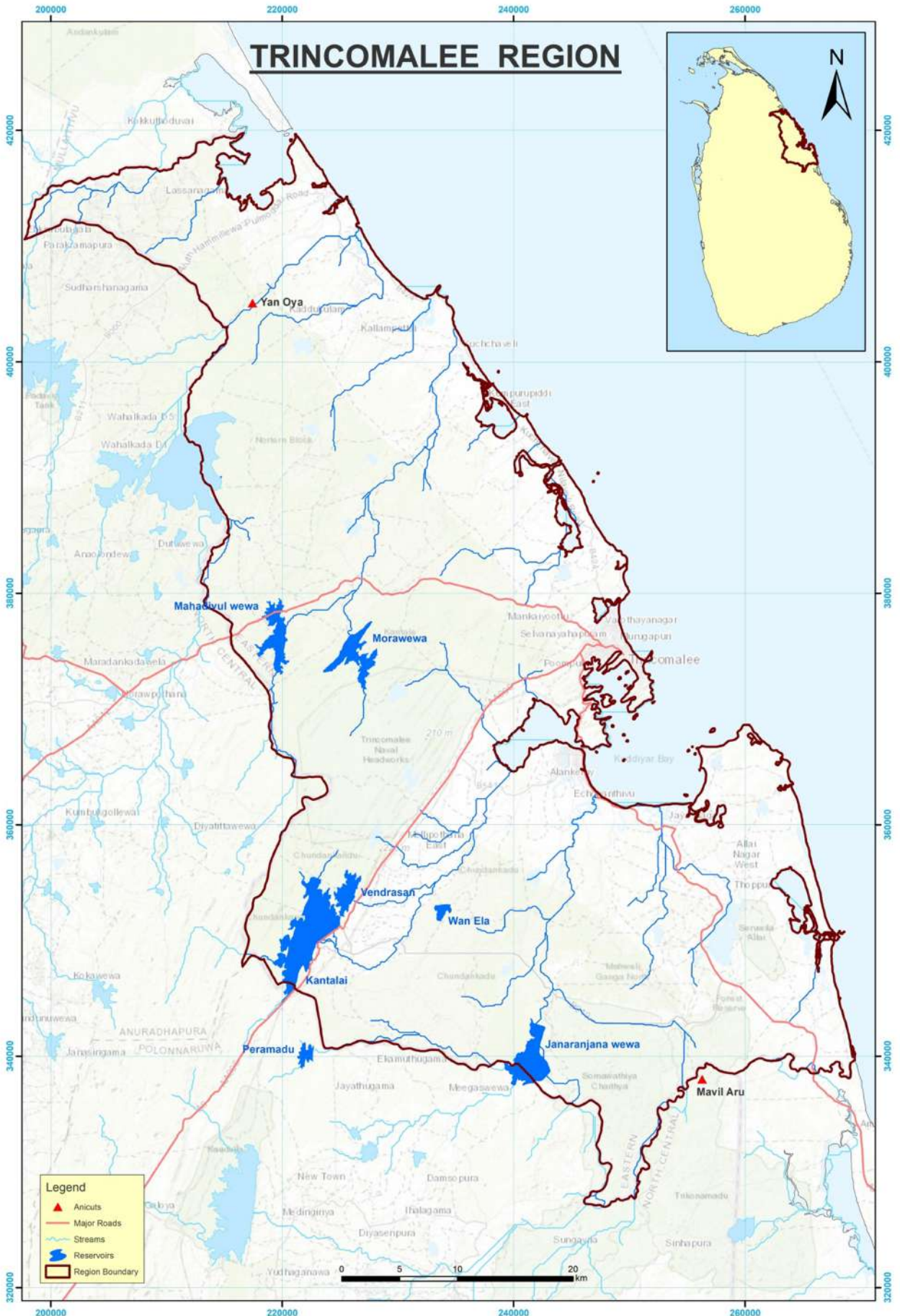
No.	Division	Name of Scheme	Irrigable Extent (ha.)	Co-ordinates	
				X	Y
Major					
1	Puttalam	Neelabemma	Gravity	123831	334381
			467		
			Lift		
			262		
2	Puttalam	Sengal Oya	615	106748	274372
Medium					
3	Inginimitiya	Radavi Bendi Ela	324	117017	306591
4	Puttalam	Wattakandal	202	97744	321384
5	Puttalam	Pawattamadu	192	104250	319171
Total			1,800*		

*Lift irrigable extent is not included

Lift Irrigation Schemes

No	Division	Name of Scheme	Irrigable Extent (ha.)
1	Puttalam	Neelabemma	262
Total			262

Total No. of Reservoirs	9
Total No. of Anicuts	5
Lift Irrigation Schemes	1
Total Irrigable Extent (ha.)	7,128



Irrigation Schemes in Trincomalee Region

[Conversion Factors: 1 ha = 2.471 Acs & 1 MCM = 810.71 Acs.ft.]

Reservoirs

No	Division	Name of Scheme	Capacity at FSL (MCM)	Irrigable Extent (ha.)	Co-ordinates	
					X	Y
Major						
1	Kantalai	Kantalai	140.6	7,511	225007	351287
2	Morawewa	Morawewa	42.9	1,943	225627	376119
3	Morawewa	Yan Oya RB*	-	1,538	-	-
4	Morawewa	Mahadivul Wewa	24.6	850	220389	378426
5	Kantalai	Janaranjana Wewa	8.51	809	241383	343389
6	Kantalai	Vendrasan	25.0	708	226308	353792
7	Kantalai	Wan Ela	2.9	656	233271	352532
Medium						
8	Kantalai	Peramadu	4.1	304	222734	340906
Total			248.61	14,319		

* Reservoir belongs to Anuradhapura Region.

Anicuts

No	Division	Name of Scheme	Irrigable Extent (ha.)	Co-ordinates	
				X	Y
Major					
1	Muthur	Allai (Mavil Aru)	10,117	255778	338621
2	Morawewa	Yan Oya	842	217436	405073
Total			10,959		

Total No. of Reservoirs	7
Total No. of Anicuts	2
Total Irrigable Extent (ha.)	25,278

Summary – 01 (Drainage Schemes)

No.	Range	Division	Name of Scheme	Irrigable Extent (ha.)
1	Colombo	Kalutara	Benthara RB	830
2	Colombo	Kalutara	Kalu Ganga LB	1,530
3	Colombo	Kalutara	Kalu Ganga RB	1,506
4	Colombo	Kalutara	Kaluwamodara	647
5	Colombo	Kaluthara	Dummalamodara	607
6	Colombo	Kaluthara	Bolgoda	2,424
7	Galle	Matara	Kiralakele	2,023
8	Galle	Matara	Kadawedduwa	2,023
9	Galle	Matara	Kadduwa	526
10	Galle	Ginganga	Hegoda	675
11	Galle	Ginganga	Halpathota	83
12	Galle	Ginganga	Kiribathawila	132
13	Galle	Ginganga	Divithura	153
14	Galle	Ginganga	Akuretiya	42
15	Galle	Ginganga	Agaliya	73
16	Galle	Ginganga	Ganegama	135
17	Galle	Ginganga	Hammeliya	44
18	Galle	Ginganga	Mahimulla	149
19	Galle	Ginganga	Indigasketiya	320
20	Galle	Ambalangoda	Ranthotuwila	850
21	Galle	Ambalangoda	Dedduwa	809
22	Galle	Ambalangoda	Elpitiya Ela	813
23	Galle	Ambalangoda	Uragasela	356
24	Galle	Ambalangoda	Uthurupitigala	103
25	Galle	Ambalangoda	Uhanowita	101
Total				16,954

Summary – 02 (Lift Irrigation Schemes)

No	Range	Division	Name of Scheme	Irrigable Extent (ha.)
1	Anuradhapura	Anuradhapura	Rajanganaya	1012
2	Galle	Matara	Akuressa	486
3	Hambanthota	Tissamaharama	Ranminithenna	2.8
4	Hambanthota	Hambanthota	Mahagal Wewa	1.8
5	Hambanthota	Hambanthota	Mau Ara	1821
6	Kurunegala	Katugampola	Wellangiriya	81
7	Kurunegala	Hiriyala	Kalugalla	85
8	Puttalam	Puttalam	Neelabamma	262
Total				3,752

Summary – 03
(Total No. of Major and Medium Schemes)

Region	Major		Medium		Drainage	Lift Irrigation	Total Extent (ha.)
	Reservoirs	Anicuts	Reservoirs	Anicuts			
Ampara	10	2	5	1	-	-	63,308
Anuradhapura	13	1	80	6	-	1	41,359
Badulla	7	3	3	6	-	-	9,807
Batticaloa	6	1	3	-	-	-	24,329
Colombo	-	5	4	19	6	-	14,113
Galle	2	2	5	6	19	1	14,178
Hambanthota	10	3	10	2	-	3	28,723
Kandy	4	3	8	19	-	-	14,812
Kurunegala	9	-	10	7	-	2	17,898
Mannar	4	-	4	2	-	-	18,685
Monaragala	3	3	19	10	-	-	8,128
Polonnaruwa	4	1	3	4	-	-	36,040
Puttalam	2	2	7	3	-	1	7,128
Trincomalee	6	2	1	-	-	-	25,278
Total	80	28	161	85	25	8	323,786

Summary – 04
(Total No. of Reservoirs and Anicuts)

No	Region	No of Reservoirs	No of Anicuts	No of Drainage Scheme	No of Lift Irrigation Scheme	Total Extent (ha.)
1	Ampara	15	3	-	-	63,308
2	Anuradhapura	93	7	-	1	41,359
3	Badulla	10	9	-	-	9,807
4	Batticaloa	9	1	-	-	24,329
5	Colombo	4	24	6	-	14,113
6	Galle	7	8	19	1	14,178
7	Hambanthota	19	5	-	3	28,723
8	Kandy	12	22	-	-	14,812
9	Kurunegala	19	7	-	2	17,898
10	Mannar	8	2	-	-	18,685
11	Monaragala	22	13	-	-	8,128
12	Polonnaruwa	7	5	-	-	36,040
13	Puttalam	9	5	-	1	7,128
14	Trincomalee	7	2	-	-	25,278
	Total	241	113	25	8	323,786

Summary 05

(Total Irrigable Area under Different types of Schemes)

Summary	Number	Extent (ha.)
Total Numbers of Major Reservoir schemes	80	215,436
Total Numbers of Medium Reservoir Schemes	161	22,872
Total Numbers of Anicut Schemes	113	64,772
Total Numbers of Drainage Schemes	25	16,954
Total Numbers of Lift Irrigation Schemes	8	3,752
Total Numbers of Irrigation Schemes	387	323,786