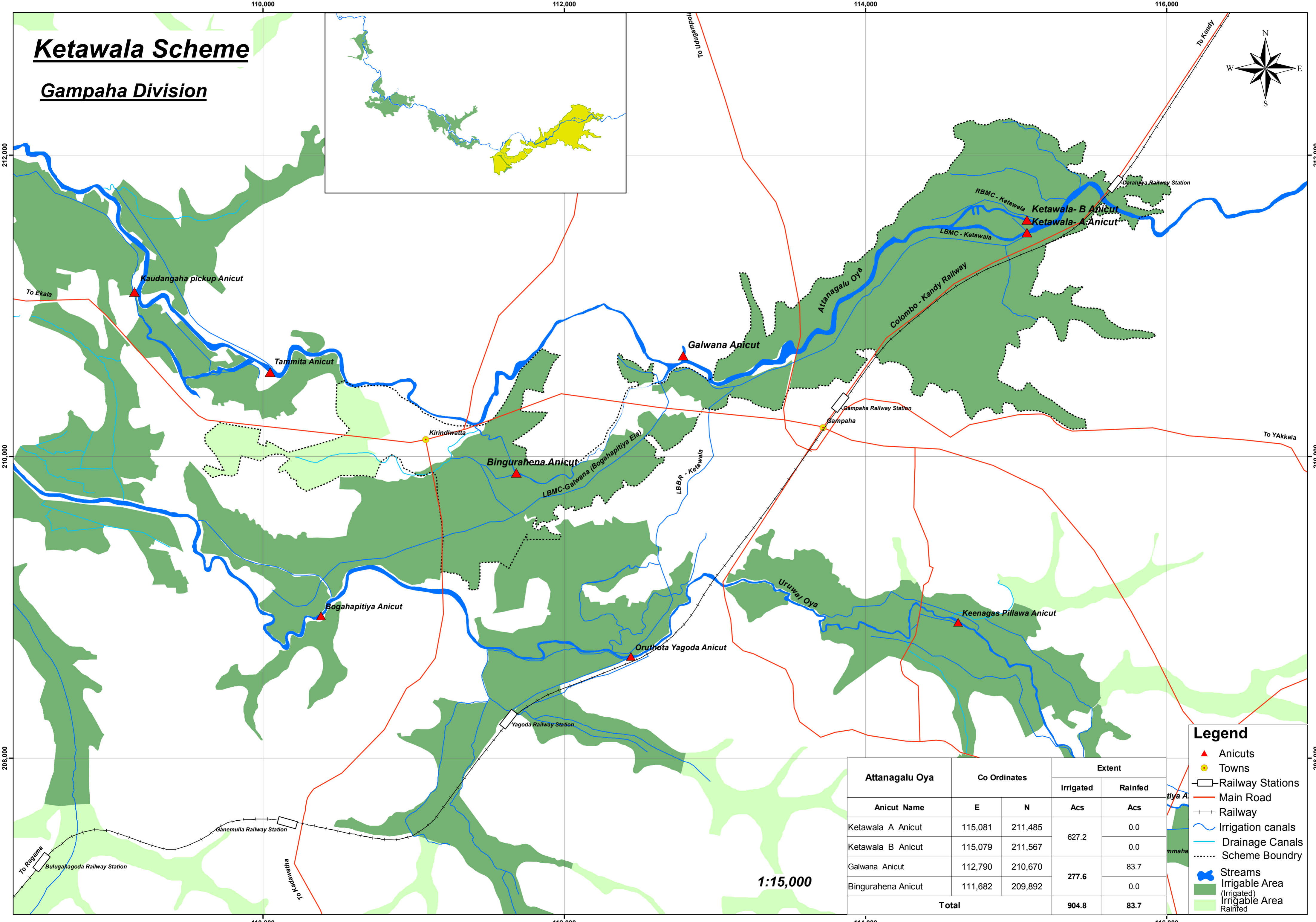
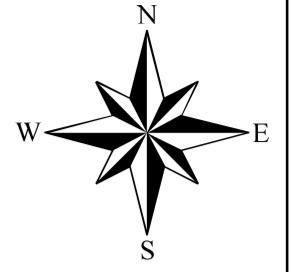
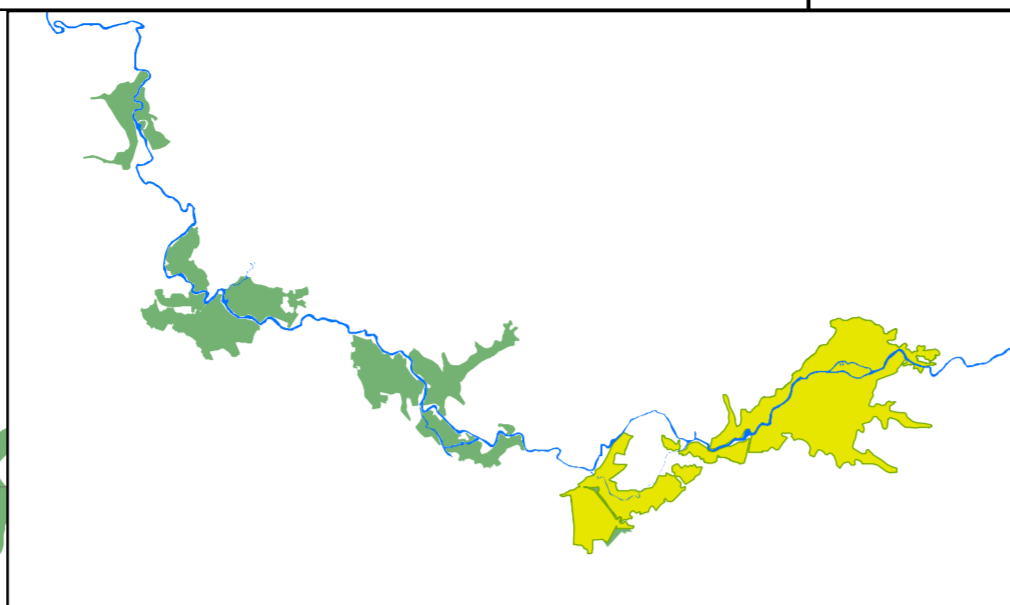


Ketawala Scheme

Gampaha Division



1:15,000

Attanagalu Oya	Co Ordinates		Extent	
	E	N	Irrigated Acs	Rainfed Acs
Ketawala A Anicut	115,081	211,485	627.2	0.0
Ketawala B Anicut	115,079	211,567		0.0
Galwana Anicut	112,790	210,670	277.6	83.7
Bingurahena Anicut	111,682	209,892		0.0
Total			904.8	83.7

Legend

- ▲ Anicuts
- Towns
- Railway Stations
- Main Road
- +— Railway
- Irrigation canals
- Drainage Canals
- Scheme Boundry
- Stream
- Irrigable Area (Irrigated)
- Irrigable Area Rainfed