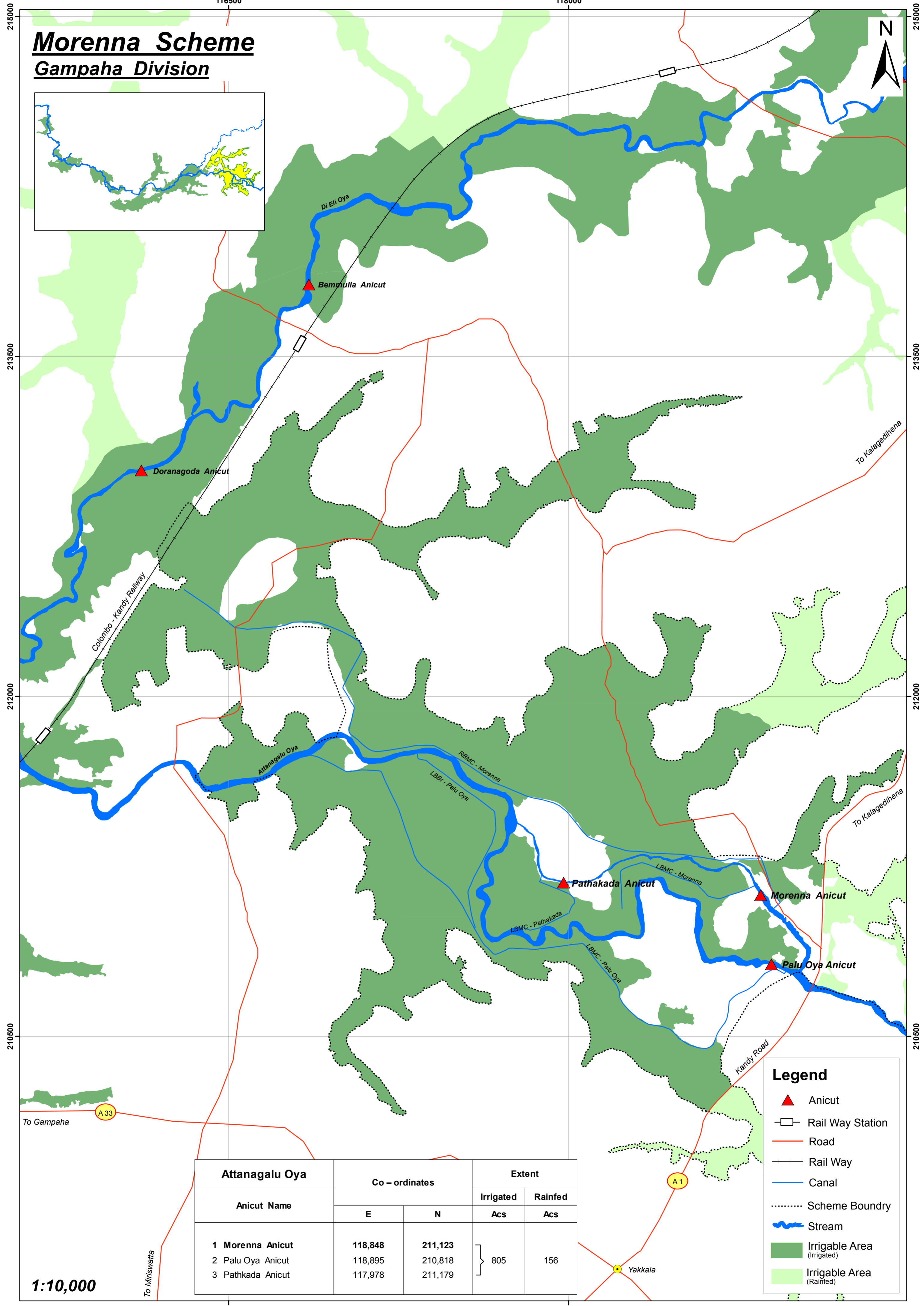
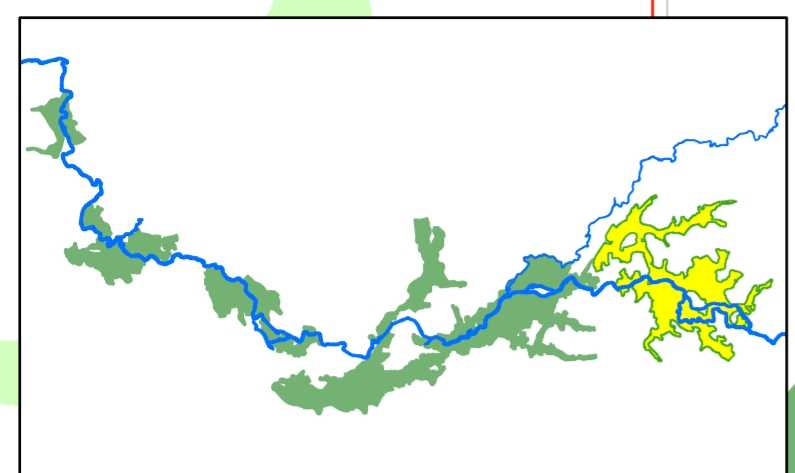


# Morenna Scheme

## Gampaha Division



Colombo - Kandy Railway

To Kalagedihena

To Kalagedihena

Kandy Road

To Gampaha

To Miriswatta

Attanagalu Oya	Co - ordinates		Extent	
	Anicut Name		Irrigated	Rainfed
	E	N	Acs	Acs
1 Morenna Anicut	118,848	211,123	} 805	156
2 Palu Oya Anicut	118,895	210,818		
3 Pathkada Anicut	117,978	211,179		

**Legend**

- ▲ Anicut
- Rail Way Station
- Road
- Rail Way
- Canal
- Scheme Boundry
- ~ Stream
- Irrigable Area (Irrigated)
- Irrigable Area (Rainfed)

1:10,000

116500

118000

Yakkala

A33

A1