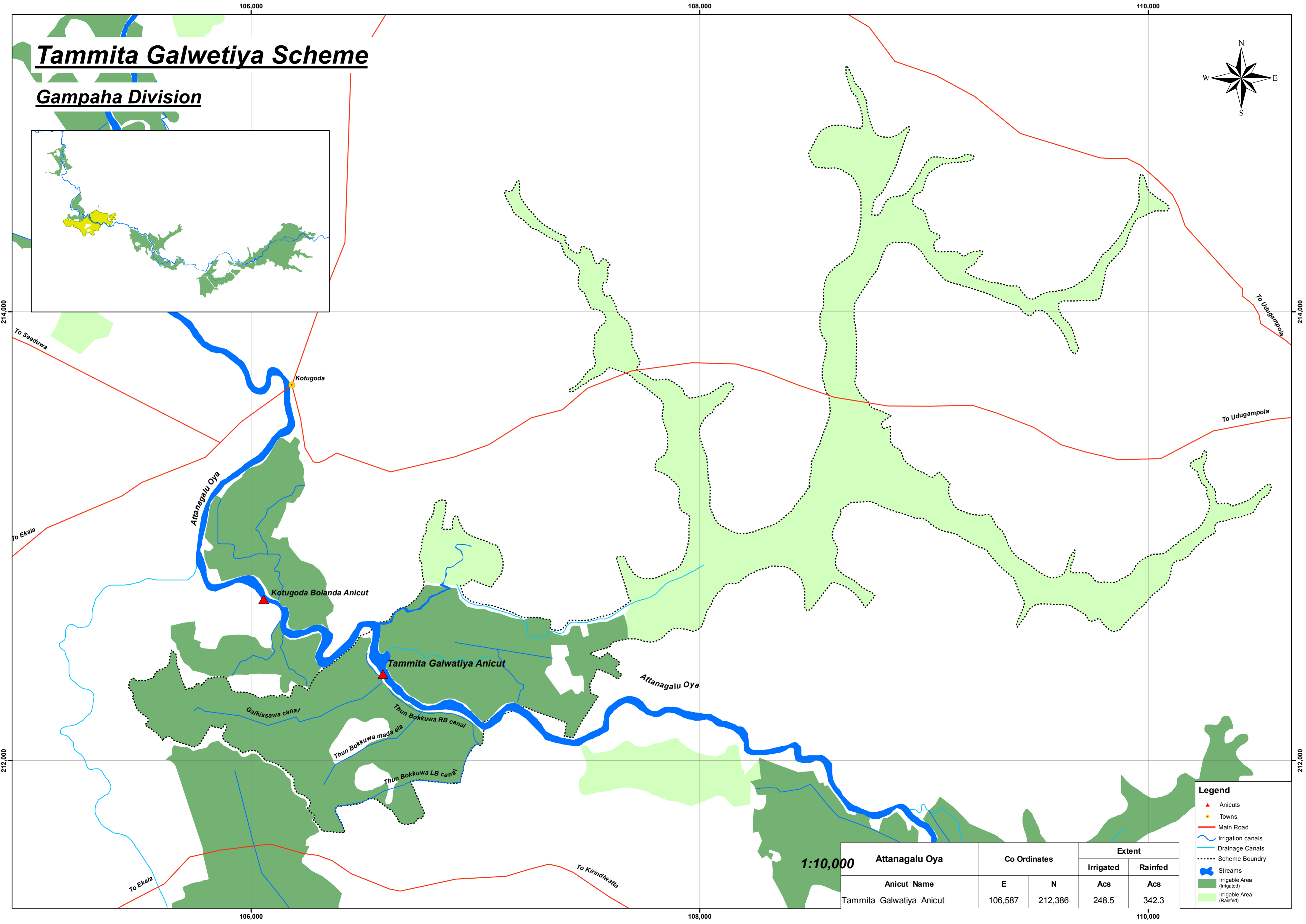
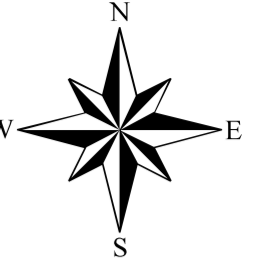
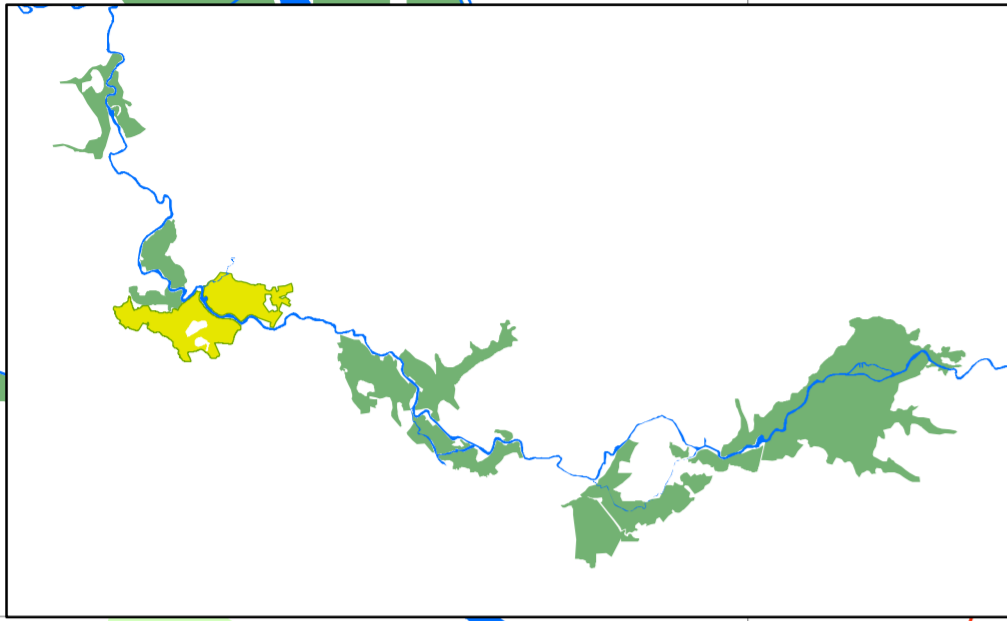


Tammita Galwetiya Scheme

Gampaha Division



214,000

214,000

212,000

212,000

106,000

108,000

110,000

106,000

108,000

110,000

To Seeduwa

To Udugampola

To Ekala

To Udugampola

Kotugoda

Attanagalu Oya

Kotugoda Bolanda Anicut

Tammita Galwetiya Anicut

Attanagalu Oya

Galkissawa cana

Thun Bokkuwa RB canal

Thun Bokkuwa mada ala

Thun Bokkuwa LB canal

To Ekala

To Kirindiwatta

1:10,000

Anicut Name	Co Ordinates		Extent	
	E	N	Irrigated Acs	Rainfed Acs
Tammita Galwetiya Anicut	106,587	212,386	248.5	342.3

Legend

- ▲ Anicuts
- Towns
- Main Road
- Irrigation canals
- Drainage Canals
- - - Scheme Boundry
- + Streams
- Irrigable Area (Irigated)
- Irrigable Area (Rainfed)